

Errata

Volume 41, No. 7, page 3589, Abstract, 12th line should read:

follow-up period from the initiation of PBT was 42.9 months.

Volume 41, No. 7, page 3589, Abstract, 14th line should read:

overall survival rates were 80.2%, 12.1% and 71.3%,

Volume 41, No. 7, page 3591, Results, Treatment outcomes paragraph, 2nd line should read:

the initiation of PBT was 42.9 months (range=3.6-102.6

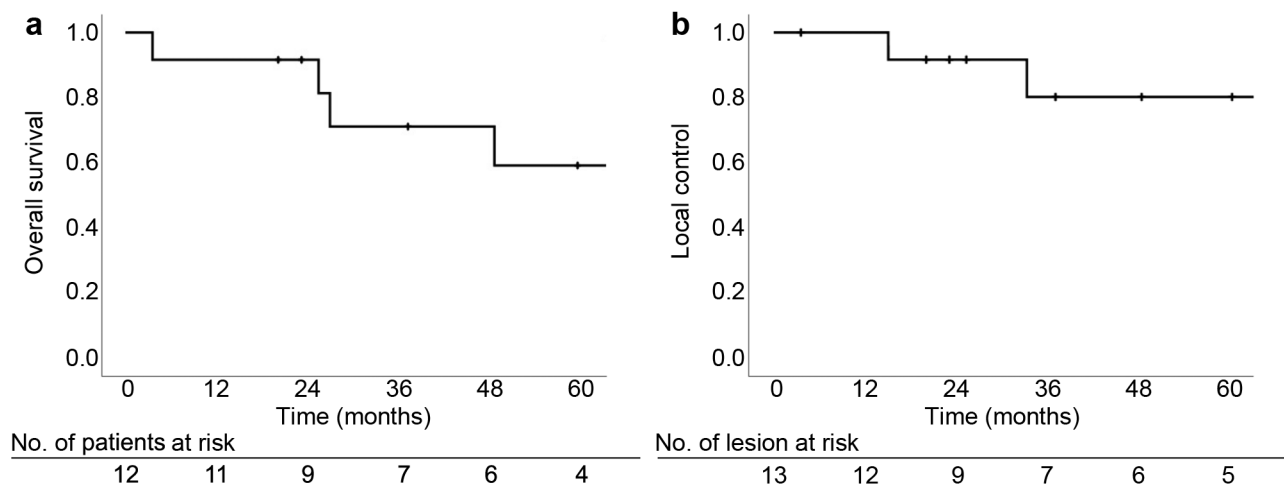
Volume 41, No. 7, page 3591, Results, Treatment outcomes paragraph, 8th-11th lines should read:

interval (CI)=55.1-100%], 12.1% (95% CI=0-33.7%) and 71.3% (95% CI=43.7-98.9%), respectively. Median survival time was 67.1 months (95% CI=24.0-110.2 months) (Figure 2).

Volume 41, No. 7, page 3592, Discussion, 1st line should read:

In our study, the 3-year OS and LC rates were 71.3% and

Volume 41, No. 7, page 3592, Figure 2 should be replace with the following:



Volume 41, No. 8, page 3860, right column, 13-14th lines should read:

Casitas B-lineage Lymphoma (CBL R149Q). Next-generation sequencing was attempted in another patient but failed due to

Volume 41, No. 8, page 3864, Authors' Contributions, 4th line should read:

Sandhu, Angela Sanguino and Shifeng Mao. Drafting of the article:

Volume 41, No. 8, page 3917, the Authors' list and the affiliations should read:

DANIEL STELLER¹, RONJA SIMON¹, ROBERT VON BIALY¹, RALPH PRIES² and SAMER G. HAKIM¹

*Departments of ¹Maxillofacial Surgery, and ²Otolaryngology, Head and Neck Surgery,
University Hospital of Lübeck, Lübeck, Germany*

Volume 41, No. 8, page 3960, Table V should be replaced with:

Table V. Descriptive statistics of the quantitative variables prior to treatment with abiraterone acetate (base line). Statistical differences between the patients with higher (group A) and lower (group B) survival rates.

	All (n=53) Median (range)	Group A (n=27) Median (range)	Group B (n=26) Median (range)	p-Value*
Treatment duration (months)	16 (3-78)	32 (6-78)	8.5 (3-16)	p<0.0001
PSA 2 w (ng/ml)	24.37 (0.87-257)	25.22 (3.47-257)	19.93 (0.87-250)	p>0.05
PSA 1 m (ng/ml)	17.96 (0.56-240)	10.40 (0.81-128)	22.01 (0.56-240)	p>0.05
PSA 2 m (ng/ml)	21.20 (0.19-329)	20.21 (0.19-329)	22.71 (0.48-246)	p>0.05
PSA 3 m (ng/ml)	11.88 (0.05-244)	8.24 (0.05-102)	13.48 (0.33-244)	p>0.05
PSA 4 m (ng/ml)	12.41 (0.16-274)	14.00 (0.52-274)	9.83 (0.16-208)	p>0.05
PSA 5 m (ng/ml)	21.61 (0.06-261)	15.73 (0.06-261)	43.63 (5.50-199)	p=0.0304
PSA 6 m (ng/ml)	16.88 (0.00-423)	11.06 (0.00-423)	47.40 (1.47-282)	p=0.0163
AP 2 w (UI/l)	89 (46-735)	84.5 (46-317)	96 (54-735)	p>0.05
AP 1 m (UI/l)	92 (49-361)	83 (49-361)	102.5 (55-340)	p>0.05
AP 2 m (UI/l)	97.5 (41-441)	83 (46-441)	98 (41-299)	p>0.05
AP 3 m (UI/l)	84.5 (41-559)	58 (41-559)	95 (54-363)	p>0.05
AP 4 m (UI/l)	92.5 (38-300)	57 (38-130)	95 (41-300)	p>0.05
AP 5 m (UI/l)	72 (44-196)	56 (44-139)	86 (54-196)	p=0.0180
AP 6 m (UI/l)	71 (35-306)	56 (35-150)	107 (42-306)	p=0.0055
LDH 2 w (UI/l)	191 (133-613)	167 (133-613)	210 (152-317)	p=0.0424
LDH 1 m (UI/l)	189 (122-347)	187 (141-287)	197 (122-347)	p>0.05
LDH 2 m (UI/l)	197 (137-393)	185 (146-253)	209 (137-393)	p>0.05
LDH 3 m (UI/l)	224 (152-360)	225 (166-281)	206 (152-360)	p>0.05
LDH 4 m (UI/l)	200 (130-328)	208 (165-267)	199 (130-328)	p>0.05
LDH 5 m (UI/l)	218 (177-320)	208 (189-308)	219 (177-320)	p>0.05
LDH 6 m (UI/l)	194 (119-525)	196 (154-525)	192 (119-408)	p>0.05

*Mann-Whitney U-test. Bold values indicate statistical significance.