

Instructions for Authors 2021

General Policy. ANTICANCER RESEARCH (AR) will accept original high quality works and reviews on all aspects of experimental and clinical cancer research. The Editorial Policy suggests that priority will be given to papers advancing the understanding of cancer causation, and to papers applying the results of basic research to cancer diagnosis, prognosis, and therapy. Each article should include a concrete conclusion constituting a “new piece of knowledge” backed up by scientific evidence. AR will also accept the following for publication: (a) Abstracts and Proceedings of scientific meetings on cancer, following consideration and approval by the Editorial Board; (b) Announcements of meetings related to cancer research; (c) Short reviews (of approximately 120 words) and announcements of newly received books and journals related to cancer, and (d) Announcements of awards and prizes.

AR provides for the prompt print and online publication of accepted articles, generally within 1-2 months from final acceptance. Manuscripts will be accepted on the understanding that they report original unpublished works in the field of cancer research that are not under consideration for publication by another journal, and that they will not be published again in the same form. All authors should sign a submission letter confirming the approval of their article contents. All material submitted to AR will be subject to peer-review, when appropriate, by two members of the Editorial Board and by one suitable outside referee. All manuscripts submitted to AR are urgently treated with absolute confidence, with access restricted to the Managing Editor, the journal’s secretary, the reviewers and the printers. The Editors reserve the right to improve manuscripts on grammar and style.

The Editors and Publishers of AR accept no responsibility for the contents and opinions expressed by the contributors. Authors should warrant due diligence in the creation and issuance of their work.

NIH Open Access Policy. The journal acknowledges that authors of NIH-funded research retain the right to provide a copy of the published manuscript to the NIH four months after publication in ANTICANCER RESEARCH, for public archiving in PubMed Central.

Copyright. Once a manuscript has been published in ANTICANCER RESEARCH, which is a copyrighted publication, the legal ownership of all published parts of the paper has been transferred from the Author(s) to the journal. Material published in the journal may not be reproduced or published elsewhere without the written consent of the Managing Editor or Publisher.

Format. Two types of papers may be submitted: (i) Full papers containing completed original work (without supplementary data), and (ii) review articles concerning fields of recognisable progress. Papers should contain all essential data in order to make the presentation clear. Reasonable economy should be exercised with respect to the number of tables and illustrations used. Papers should be written in clear, concise English. Spelling should follow that given in the “Shorter Oxford English Dictionary”.

Manuscripts. Submitted manuscripts exceeding 4 printed pages will be subject to excess page charges. The 4 printed pages correspond approximately to twelve (12) document pages (~250 words per double-spaced typed page in Arial 12), including abstract, text, tables, figures, and references. All manuscripts should be divided into the following sections: (a) *First page* including the title of the presented work [not exceeding fifteen (15) words], full names and full postal addresses of all Authors, name of the Author to whom proofs are to be sent, key words, an abbreviated running title, an indication “review”, “clinical”, “epidemiological”, or “experimental” study, and the date of submission. (Note: The order of the Authors is not necessarily indicative of their contribution to the work. Authors may note their individual contribution(s) in the appropriate section(s) of the presented work or before the Acknowledgements); (b) *Abstract* not exceeding 150 words, organized according to the following headings: Background/Aim – Materials and Methods/Patients and Methods – Results – Conclusion; (c) *Introduction*; (d) *Materials and Methods/Patients and Methods*; (e) *Results*; (f) *Discussion*; (g) *Conflicts of Interest*; (h) *Authors’ contributions*; (i) *Acknowledgements*; (j) *References*. All pages must be numbered consecutively. Footnotes should be avoided. Review articles may follow a different style according to the subject matter and the Author’s opinion. Review articles should not exceed 35 pages (approximately 250 words per double-spaced typed page) including all tables, figures, and references.

Figures (graphs and photographs). All figures should appear at the end of the submitted document file. Once a manuscript is accepted all figures should be submitted separately in either jpg, tiff or pdf format and at a minimum resolution of 300 dpi. Graphs must be submitted as pictures made from drawings and must not require any artwork, typesetting, or size modifications. Figures should be prepared at a width of 8 or 17cm with eligible symbols, lettering and numbers. The number of each figure must be indicated. Pages that include color figures are subject to color charges.

Tables. All tables should appear at the end of the submitted document file. Each table may have 2-10 vertical columns. Once a manuscript is accepted, each table should be submitted separately, typed double-spaced. Tables should be numbered with Roman numerals and should include a short title.

References. Authors must assume responsibility for the accuracy of the references used. Citations for the reference sections of submitted works should follow the form below and must be numbered consecutively. In the text, references should be cited by number in parenthesis. Examples: 1 Kenyon J, Liu W and Dalgleish A: Report of objective clinical responses of cancer patients to pharmaceutical-grade synthetic cannabidiol. *Anticancer Res* 38(10): 5831-5835, 2018. PMID: 30275207. DOI: 10.21873/anticancer.12924. (PMIDs and DOIs only if

applicable). 2 McGuire WL and Chamnes GC: Studies on the oestrogen receptor in breast cancer. In: Receptors for Reproductive Hormones. O' Malley BW, Chamnes GC (eds.). New York, Plenum Publ Corp., pp 113-136, 1973. 3 Global Health Estimates 2015: Disease Burden by Cause, Age, Sex, by Country and by Region, 2000-2015. Geneva, World Health Organisation, 2016. Available at http://www.who.int/healthinfo/global_burden_disease/estimates/en/index2.html. Last accessed on 3rd April 2018. (The web address should link directly to the cited information and not to a generic webpage).

Nomenclature and Abbreviations. Nomenclature should follow that given in "Chemical Abstracts", "Index Medicus", "Merck Index", "IUPAC -IUB", "Bergey's Manual of Determinative Bacteriology", The CBE Manual for Authors, Editors and Publishers (6th edition, 1994), and MIAME Standard for Microarray Data. Human gene symbols may be obtained from the HUGO Gene Nomenclature Committee (HGNC) (<http://www.gene.ucl.ac.uk/>). Approved mouse nomenclature may be obtained from <http://www.informatics.jax.org/>. Standard abbreviations are preferable. If a new abbreviation is used, it must be defined on first usage.

Clinical Trials. Authors of manuscripts describing clinical trials should provide the appropriate clinical trial number in the correct format in the text.

For International Standard Randomised Controlled Trials (ISRCTN) Registry (a not-for-profit organization whose registry is administered by Current Controlled Trials Ltd.) the unique number must be provided in this format: ISRCTNXXXXXXXX (where XXXXXXXX represents the unique number, always prefixed by "ISRCTN"). Please note that there is no space between the prefix "ISRCTN" and the number. Example: ISRCTN47956475.

For Clinicaltrials.gov registered trials, the unique number must be provided in this format: NCTXXXXXXXX (where XXXXXXXX represents the unique number, always prefixed by 'NCT'). Please note that there is no space between the prefix 'NCT' and the number. Example: NCT00001789.

Ethical Policies and Standards. ANTICANCER RESEARCH agrees with and follows the "Uniform Requirements for Manuscripts Submitted to Biomedical Journals" established by the International Committee of Medical Journal Editors in 1978 and updated in October 2001 (www.icmje.org). Microarray data analysis should comply with the "Minimum Information About Microarray Experiments (MIAME) standard". Specific guidelines are provided at the "Microarray Gene Expression Data Society" (MGED) website. Presentation of genome sequences should follow the guidelines of the NHGRI Policy on Release of Human Genomic Sequence Data. Research involving human beings must adhere to the principles of the Declaration of Helsinki and Title 45, U.S. Code of Federal Regulations, Part 46, Protection of Human Subjects, effective December 13, 2001. Research involving animals must adhere to the Guiding Principles in the Care and Use of Animals approved by the Council of the American Physiological Society. The use of animals in biomedical research should be under the careful supervision of a person adequately trained in this field and the animals must be treated humanely at all times. Research involving the use of human foetuses, foetal tissue, embryos and embryonic cells should adhere to the U.S. Public Law 103-41, effective December 13, 2001.

Submission of Manuscripts. Please follow the Instructions for Authors regarding the format of your manuscript and references. Manuscripts must be submitted only through our online submission system at: <http://www.iiar-submissions.com/login.html> In case a submission is incomplete, the corresponding Author will be notified accordingly. Questions regarding difficulties in using the online submission system should be addressed to: email: journals@iiar-anticancer.org

Galley Proofs. Unless otherwise indicated, galley proofs will be sent to the corresponding Author of the submission. Corrections of galley proofs should be limited to typographical errors. Reprints, PDF files, and/or Open Access may be ordered after the acceptance of the paper. Authors of online open access articles are entitled to a complimentary online subscription to Anticancer Research for the current year and all previous digital content since 2004 (upon request to the Subscriptions Office). Galley proofs should be returned corrected to the Editorial Office by email (iiar@iiar-anticancer.org) within two days.

Specific information and additional instructions for Authors

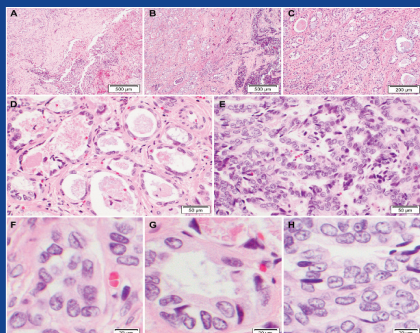
1. Anticancer Research (AR) closely follows the new developments in all fields of experimental and clinical cancer research by (a) inviting reviews on topics of immediate importance and substantial progress in the last three years, and (b) providing the highest priority for rapid publication to manuscripts presenting original results judged to be of exceptional value. Theoretical papers will only be considered and accepted if they bear a significant impact or formulate existing knowledge for the benefit of research progress.
2. Anticancer Research will consider the publication of conference proceedings and/or abstracts provided that the material submitted fulfils the quality requirements and instructions of the journal, following the regular review process by two suitable referees.
3. An acknowledgement of receipt, including the article number, title and date of receipt is sent to the corresponding author of each manuscript upon receipt. If this receipt is not received within 5 days from submission, the author should contact the Editorial Office to ensure that the manuscript (or the receipt) was not lost in the mail or during electronic submission.

4. Each manuscript submitted to AR is sent for peer-review in confidence to two-three suitable referees with the request to return the manuscript with their comments to the Editorial Office within 12 days from receipt. If reviewers need a longer time or wish to send the manuscript to another expert, the manuscript may be returned to the Editorial Office with a delay. All manuscripts submitted to AR, are treated in confidence, without access to any person other than the Managing Editor, the journal's secretary, the reviewers and the printers.
 5. All accepted manuscripts are carefully corrected in style and language, if necessary, to make presentation clear. (There is no fee for this service). Every effort is made (a) to maintain the personal style of the author's writing and (b) to avoid change of meaning. Authors will be requested to examine carefully manuscripts which have undergone language correction at the pre-proof or proof stage.
 6. Authors should pay attention to the following points when writing an article for AR:
 - The Instructions to Authors must be followed in every detail.
 - The presentation of the experimental methods should be clear and complete in every detail facilitating reproducibility by other scientists.
 - The presentation of results should be simple and straightforward in style. Results and Discussion should not be combined into one section.
 - Results given in figures should not be repeated in tables.
 - Photographs should be clear with high contrast, presenting the actual observation described in the legend and in the text. Each legend should provide a complete description, being self-explanatory, including technique of preparation, information about the specimen and magnification.
 - Statistical analysis should be elaborated wherever it is necessary. Simplification of presentation by giving only numerical or % values should be avoided.
 - Fidelity of the techniques and reproducibility of the results, should be points of particular importance in the discussion section. Authors are advised to check the correctness of their methods and results carefully before writing an article. Probable or dubious explanations should be avoided.
 - Authors should not cite results submitted for publication in the reference section. Such results may be described briefly in the text with a note in parenthesis (submitted for publication by... authors, year).
 - References. Each article should address, list and discuss the entire spectrum of current publications relevant to its field.
 - By following these instructions, Authors will facilitate a more rapid review and processing of their manuscripts and will provide the readers with concise and useful papers.
 7. Following review and acceptance, a manuscript is examined in language and style, and galley proofs are rapidly prepared. Second proofs are not sent unless required.
 8. Authors should correct their galley proofs very carefully and preferably twice. An additional correction by a colleague always proves to be useful. Particular attention should be paid to chemical formulas, mathematical equations, symbols, medical nomenclature etc. Any system of correction marks can be used in a clear manner, preferably with a red pen. Additions or clarifications are allowed provided that they improve the presentation but do not bring new results (no fee).
 9. Articles submitted to AR may be rejected without review if:
 - they do not fall within the journal's policy.
 - they do not follow the instructions for authors.
 - language is unclear.
 - results are not sufficient to support a final conclusion.
 - results are not objectively based on valid experiments.
 - they repeat results already published by the same or other authors before the submission to AR.
 - plagiarism is detected by plagiarism screening services.
 (Rejection rate (2020): 68%).
 10. Authors who wish to prepare a review should contact the Managing Editor of the journal in order to get confirmation of interest in the particular topic of the review. The expression of interest by the Managing Editor does not necessarily imply acceptance of the review by the journal.
 11. Authors may inquire information about the status of their manuscript(s) by calling the Editorial Office at +30-22950-53389, Monday to Friday 9.00-16.00 (Athens time), or by sending an e-mail to journals@iiar-anticancer.org
 12. Authors who wish to organize and edit a special issue on a particular topic should contact the Managing Editor.
 13. Authors, Editors and Publishers of books are welcome to submit their books for immediate review in AR. There is no fee for this service.
- (This text is a combination of advice and suggestions contributed by Editors, Authors, Readers and the Managing Editor of AR).

Copyright© 2021 – International Institute of Anticancer Research (G.J. Delinasios). All rights reserved (including those of translation into other languages). No part of this journal may be reproduced, stored in a retrieval system, or transmitted in any form or by any means, electronic, mechanical, photocopying, microfilming, recording or otherwise, without written permission from the Publisher.

CANCER GENOMICS & PROTEOMICS

ISSN (online): 1790-6245



Published by the International Institute of Anticancer Research

Online ISSN: 1790-6245

General Policy

- **CANCER GENOMICS & PROTEOMICS (CGP)** welcomes submissions of original high quality articles and reviews on all aspects of the application of genomic and proteomic technologies to experimental and clinical cancer research. The journal's scientific spectrum includes: (a) molecular causes of carcinogenesis, cancer progression and metastasis; (b) structural and functional aspects of genes in the cancer cell; (c) advances in genomic and proteomic technologies applicable to cancer research; (d) anticancer drug design and drug development. A main aim of CGP is to ensure the prompt and confidential review, and rapid publication of original works and reviews, generally within 1-3 months from submission.
- CGP is published bimonthly by the **International Institute of Anticancer Research (IIAR)** and is available online only and open access with **Stanford University HighWire Press**. For more information please visit our website www.cgp.iiarjournals.org.
- **Editorial Office:** International Institute of Anticancer Research, 1st km Kapandritiou-Kalamou Rd., P.O. Box 22, Kapandriti, Attiki 19014, Greece. Tel: +30 22950 52945, Fax: +30 22950 53389.
- **U.S. Branch:** Anticancer Research Inc., USA, 111 Bay Avenue, Highlands, NJ, USA.
- **E-mail:** journals@iiar-anticancer.org; IIAR WEBSITES: www.iiar-anticancer.org and www.iiarjournals.org

● Selection of Recent Articles

Micro RNAs Promoting Growth and Metastasis in Preclinical *In Vivo* Models of Subcutaneous Melanoma. U.H. WEIDLE, S. AUSLÄNDER, U. BRINKMANN (*Penzberg, Germany*)

Differential Proteomic Analysis of Hepatocellular Carcinomas from *Ppp2r5d* Knockout Mice and Normal (Knockout) Livers. C. LAMBRECHT, G.B. FERREIRA, J.D. OMELLA, L. LIBBRECHT, R. DE VOS, R. DERUA, C. MATHIEU, L. OVERBERGH, E. WAELEKENS, V. JANSSENS (*Leuven; Brussels, Belgium*)

Stem-like Cells from Invasive Breast Carcinoma Cell Line MDA-MB-231 Express a Distinct Set of Eph Receptors and Ephrin Ligands. M. LUCERO, J. THIND, J. SANDOVAL, S. SENAATI, B. JIMENEZ, R.P. KANDPAL (*Pomona, CA, USA*)

Circulating Tumor DNA in Biliary Tract Cancer: Current Evidence and Future Perspectives. A. RIZZO, A.D. RICCI, S. TAVOLARI, G. BRANDI (*Bologna, Italy*)

Whole-transcriptome Analysis of Fully Viable Energy Efficient Glycolytic-null Cancer Cells Established by Double Genetic Knockout of Lactate Dehydrogenase A/B or Glucose-6-Phosphate Isomerase. E. MAZZIO, R. BADISA, N. MACK, S. CASSIM, M. ZDRALEVIC, J. POUYSSEGUR, K.F.A. SOLIMAN (*Tallahassee, FL, USA; Monaco, Monaco; Nice, France*)

TIP60/P400/H4K12ac Plays a Role as a Heterochromatin Back-up Skeleton in Breast Cancer. M. IDRISOU, T. BOISNIER, A. SANCHEZ, F.Z.H. KHOUFAR, F. PENAULT-LORCA, Y.-J. BIGNON, D. BERNARD-GALLON (*Clermont-Ferrand, France*)

STRA6 Expression Serves as a Prognostic Biomarker of Gastric Cancer. S. NAKAMURA, M. KANDA, D. SHIMIZU, K. SAWAKI, C. TANAKA, N. HATTORI, M. HAYASHI, S. YAMADA, G. NAKAYAMA, K. OMAE, M. KOIKE, Y. KODERA (*Nagoya; Fukushima, Japan*)

Expression Patterns of CD44 and AREG Under Treatment With Selective Tyrosine Kinase Inhibitors in HPV+ and HPV- Squamous Cell Carcinoma. B. KANSY, C. ADERHOLD, L. HUBER, S. LUDWIG, R. BIRK, A. LAMMERT, S. LANG, N. ROTTER, B. KRAMER (*Essen; Mannheim; Marburg, Germany*)

Chromobox 2 Expression Predicts Prognosis After Curative Resection of Oesophageal Squamous Cell Carcinoma. S. UEDA, M. KANDA, Y. SATO, H. BABA, S. NAKAMURA, K. SAWAKI, D. SHIMIZU, S. MOTOYAMA, T. FUJII, Y. KODERA, S. NOMOTO (*Nagoya; Akita; Toyama, Japan*)

Fusion of the Lumican (*LUM*) Gene With the Ubiquitin Specific Peptidase 6 (*USP6*) Gene in an Aneurysmal Bone Cyst Carrying a t(12;17)(q21;p13) Chromosome Translocation. I. PANAGOPOULOS, L. GORUNOVA, K. ANDERSEN, I. LOBMAIER, M. LUND-IVERSEN, F. MICCI, S. HEIM (*Oslo, Norway*)

Influence of Concurrent Mutations on Overall Survival in EGFR-mutated Non-small Cell Lung Cancer. M. CHEVALLIER, P. TSANTOULIS, A. ADDEO, A. FRIEDLAENDER (*Geneva, Switzerland*)

Long Noncoding RNA *ANROC* on the *INK4* Locus Functions to Suppress Cell Proliferation. Y. KOTAKE, T. TSURUDA (*Fukuoka, Japan*)

The KDR (VEGFR-2) Genetic Polymorphism Q472H and c-KIT Polymorphism M541L Are Associated With More Aggressive Behaviour in Astrocytic Gliomas. N. ZAMAN, S.S. DASS, P.D. PARCQ, S. MACMAHON, L. GALLAGHER, L. THOMPSON, J.S. KHORASHAD, C. LIMBÄCK-STANIC (*London, UK*)

KIF15 Expression in Tumor-associated Monocytes Is a Prognostic Biomarker in Hepatocellular Carcinoma. A. KITAGAWA, T. MASUDA, J. TAKAHASHI, T. TOBO, M. NODA, Y. KURODA, Q. HU, Y. KOUYAMA, Y. KOBAYASHI, S. KURAMITSU, K. SATO, A. FUJII, Y. YOSHIKAWA, H. WAKIYAMA, D. SHIMIZU, Y. TSURUDA, H. EGUCHI, Y. DOKI, M. MORI, K. MIMORI (*Oita; Osaka; Fukuoka, Japan*)

Mixed HPV-related Neuroendocrine Carcinoma and HPV-related Squamous Cell Carcinoma of the Base of Tongue in a Patient With Incidental Identification of Synchronous Metastatic Papillary Thyroid Carcinoma. C. CAO, S.M. POTI, L.G. LEDGERWOOD, J. LAI (<i>Providence, RI; Sacramento, CA, USA</i>)	3639
Comparison of Chemotherapy-induced Nausea and Vomiting Between Gemcitabine Plus Nab-paclitaxel Combination Chemotherapy and Gemcitabine Monotherapy in Patients With Advanced Pancreatic Cancer. K. OHATA, H. FUJII, S. SADAKA, H. KATO-HAYASHI, H. IIHARA, R. KOBAYASHI, S. UEMURA, T. IWASHITA, M. SHIMIZU, A. SUZUKI (<i>Gifu, Japan</i>)	3643
EUS-guided Transgastric Drainage to Manage a Postoperative Pancreatic Fistula After Distal Pancreatectomy and Splenectomy in Recurrent Ovarian Cancer: A Case Report. A. MIRANDA, C. JÜRGENSEN, R. CHEKEROV, S. CHOPRA, B. GEBAUER, J. SEHOULI (<i>Berlin, Germany</i>)	3649
Therapeutic Strategy of Colorectal Liver Metastasis Using Modified-JHBPS Nomogram. H. KUBO, H. IKOMA, Y. YAMAMOTO, R. MORIMURA, J. KIUCHI, H. SHIMIZU, T. ARITA, Y. KURIU, K. OKAMOTO, E. OTSUJI (<i>Kyoto, Japan</i>)	3657
Massive Transoral Bleeding from the Internal Carotid Artery in a Patient With Granulomatosis With Polyangiitis (Wegener). D. KÖNIG, T. SAUVIGNY, C. BREKENFELD, R.E. FRIEDRICH, M. GOSAU, A.T. ASSAF (<i>Hamburg, Germany</i>)	3667
Systemic Inflammatory Score Predicts Response and Prognosis in Patients With Lung Cancer Treated With Immunotherapy. J. ZAITSU, Y. YAMASHITA, A. ISHIKAWA, A. SAITO, A. KAGIMOTO, T. MIMURA, T. HIRAKAWA, M. MITO, K. FUKUHARA, T. SENOO, K. NAKANO, K. KURAOKA, K. TANIYAMA (<i>Kure, Japan</i>)	3673
Clinical Impact of Postoperative Vitamin D Deficiency on the Recurrence of Colon Cancer After Curative Surgical Resection. J. KIM, D.W. BAEK, J.H. BAEK, B.W. KANG, S.H. SONG, H.J. KIM, S.Y. PARK, J.S. PARK, G.-S. CHOI, J.G. KIM (<i>Daegu, Republic of Korea</i>)	3683
The Intestinal Stem Cell Marker SMOC2 Is an Independent Prognostic Marker Associated With Better Survival in Gastric Cancer. C.L. HYUN, S.J. PARK, H.S. KIM, H.J. SONG, H.U. KIM, C. LEE, D.H. LEE, Y.H. MAENG, Y.S. KIM, B. JANG (<i>Jeju; Seoul, Republic of Korea</i>)	3689
Possible Pseudo-progression of Non-small Cell Lung Carcinoma in a Patient With Clinical Hyper-progression Associated With Trousseau Syndrome Who Was Treated With Pembrolizumab: A Case Report. Y. SHIONOYA, Y. HIROHASHI, H. TAKAHASHI, M. HASHIMOTO, K. NISHIYAMA, Y. TAKAKUWA, M. NAKATSUGAWA, T. KUBO, T. KANASEKI, T. TSUKAHARA, T. TORIGOE (<i>Hokkaido, Japan</i>)	3699

Lactate Dehydrogenase Is a Useful Marker for Predicting the Efficacy of Bevacizumab-containing Chemotherapy in Patients With Metastatic Colorectal Cancer. M. SHIBUTANI, K. MAEDA, S. KASHIWAGI, H. NAGAHARA, T. FUKUOKA, Y. ISEKI, E. WANG, Y. OKAZAKI, K. HIRAKAWA, M. OHIRA (<i>Osaka, Japan</i>).....	3535
Total Mesometrial Resection With (Neo)Adjuvant Chemotherapy in Locally Advanced Cervical Cancer: A Tumor Response Score. M. KIESEL, S. SAUER, S. LÖB, S.L. HERBERT, A. WÖCKEL, C. WULFF (<i>Würzburg, Germany</i>).....	3543
Resilience in Radiotherapy Services During the COVID-19 Emergency: Collaboration Between the Regional Radiation Oncology Departments of Lazio, Abruzzo and Molise. M. DE ANGELI, D. ANZELLINI, G. ARCANGELI, P. BIANCHI, C. CHIOSTRINI, A. CIABATTONI, A.M. COSTA, S. DEL BUFALO, F. DEODATO, U. DE PAULA, C. D’UGO, F. FEDELE, D. GENOVESI, P. GENTILE, G.L. GRAVINA, L. MARMIROLI, M.A. MIRRI, S. RAMELLA, M.E. ROSETTO, M. SANTARELLI, V. TOMBOLINI, L. TRODELLA, V. VALENTINI, M.F. OSTI, R.M. D’ANGELILLO (<i>Rome; Latina; Sora; Campobasso; Teramo; Lazio; Chieti; L’Aquila; Viterbo; Rieti, Italy</i>).....	3561
Primary Colonic Medullary Carcinoma With Exclusive Squamous Differentiation. I.Y. CHEN, J.J. FINDEIS-HOSEY, L. CANNON, X. LIAO (<i>Rochester, NY, USA</i>)	3567
Gemcitabine Plus Nanoparticle Albumin–bound Paclitaxel Versus FOLFIRINOX for Recurrent Pancreatic Cancer After Resection. H. TAGUCHI, T. OTSUKA, M. SHIMOKAWA, S. ARIMA, S. HASHIMOTO, A. IDO, F. KOGA, Y. UEDA, J. NAKAZAWA, A. KOMORI, S. OTSU, M. FUKAHORI, A. MAKIYAMA, T. HONDA, T. SHIBUKI, T. MIZUTA, K. MITSUGI, K. NIO, Y. IDE, N. URESHINO, T. SHIRAKAWA (<i>Kagoshima; Saga; Fukuoka; Yamaguchi; Kumamoto; Oita; Gifu; Nagasaki; Chiba, Japan</i>)	3573
Clinical Significance of <i>PLA2G2A</i> Expression in Gastric Cancer Patients who Receive Gastrectomy and Adjuvant S-1. S. HATORI, K. SAKAMAKI, T. YOKOHORI, Y. KIMURA, Y. HIROSHIMA, I. HASHIMOTO, K. KOMORI, H. WATANABE, K. KANO, H. FUJIKAWA, T. AOYAMA, M. NUMATA, T. YAMADA, H. TAMAGAWA, N. YAMAMOTO, T. OGATA, M. SHIZAWA, N. YUKAWA, S. MORINAGA, Y. RINO, M. MASUDA, H. SAEKI, Y. MIYAGI, T. OSHIMA (<i>Yokohama; Maebashi, Japan</i>).....	3583
Proton Beam Therapy for Local Recurrence of Rectal Cancer. Y. HIROSHIMA, H. ISHIKAWA, M. MURAKAMI, M. NAKAMURA, S. SHIMIZU, T. ENOMOTO, T. ODA, M. MIZUMOTO, K. NAKAI, T. OKUMURA, H. SAKURAI (<i>Tsukuba; Chiba, Japan</i>)	3589
Bromodomain-containing Protein 4 Is a Favourable Prognostic Factor in Breast Cancer Patients. C. SUZUKI, A. YAMADA, S. ADACHI, H. SHIMA, K. KIDA, M. OSHI, S. SUGAE, S. YAMAMOTO, K. NARUI, M. TANABE, K. TAKABE, Y. ICHIKAWA, T. ISHIKAWA, I. ENDO (<i>Yokohama; Tokyo, Japan; Buffalo, NY, USA</i>)	3597
Health Equity Within Inequity: Timing of Diagnostic Breast Cancer Care in an Underserved Medical Population. A. TANG, C.M. MOONEY, G. BEATTIE, C.M. COHAN, K.B. KNOPF, Z. HARPER, S.R. UGARTE, A.L. KHOURY (<i>Oakland, CA, USA</i>).....	3607
Effect of Adjuvant Chemotherapy on Survival of Elderly Patients With Stage III Colorectal Cancer. M. SHIBUTANI, K. MAEDA, S. KASHIWAGI, K. HIRAKAWA, M. OHIRA (<i>Osaka, Japan</i>).....	3615
Pretreatment Absolute Lymphocyte Count and Neutrophil-to-lymphocyte Ratio Are Prognostic Factors for Stage III Breast Cancer. K. YAMANOUCHI, S. MAEDA, D. TAKEI, Y. KOGA, M. YAMASHITA, T. HAMADA, T. HIRAYAMA, A. YONEDA, T. TOKUNAGA, H. TAKESHITA, T. KUROKI (<i>Nagasaki, Japan</i>).....	3625
Salvage Radiation Treatment for Primary Refractory Diffuse Large B-cell Lymphoma After Chimeric Antigen Receptor (CAR) T-cell Therapy: A Case Report. K. WANG, A.V. PRABHU, A. SASAPU, G.D. LEWIS (<i>Little Rock, AR, USA</i>)	3635

The Prognostic Significance of Plakophilin-1 Expression in Esophageal Cancer. J. FUJITA, M. NAKAJIMA, H. MUROI, M. KIKUCHI, K. IHARA, T. YAMAGUCHI, M. NAKAGAWA, S. MORITA, T. NAKAMURA, T. TSUCHIOKA, K. KOJIMA (<i>Mibu, Japan</i>)	3401
HOXB5 Confers Tamoxifen Resistance in Breast Cancer Cells and Promotes Tumor Aggression and Progression. C.Y. KIM, Y.C. KIM, J.H. OH, M.H. KIM (<i>Seoul, Republic of Korea</i>)	3409
Prophylactic Dendritic Cell Vaccination in Experimental Breast Cancer Controls Immunity and Hepatic Metastases. J. FERREIRA VIEIRA, A.P. PEIXOTO, E.F. CANDIDO MURTA, M.A. MICHELIN (<i>Uberaba, MG, Brazil</i>)	3419
Novel Prognostic Stratification Factor Based on the Pathological Profile of the Invasive Front in Colorectal Cancer. H. MATSUI, S. HOMMA, K.C. HATANAKA, A. SAWADA, K. IMAIZUMI, T. YOSHIDA, N. ICHIKAWA, S. EMOTO, Y. MIYAOKA, N. TAKAHASHI, Y. MATSUNO, Y. HATANAKA, A. TAKETOMI (<i>Sapporo; Hakodate, Japan</i>).....	3429
PD-L1 Expression, T-lymphocyte Subpopulations and Langerhans Cells in Cutaneous Squamous Cell Carcinoma and Precursor Lesions. A. STRAVODIMOU, V. TZELEPI, S. BALASIS, S. GEORGIOU, H. PAPADAKI, A. MOUZAKI, M. MELACHRINO, E.P. KOUREA (<i>Patras, Greece</i>)	3439
Effects of Epstein-Barr Virus Infection on the Response of Human Breast Cancer Cells to Nicotine. L. RAJBONGSHI, M.H. NOH, Y.S. KIM, D.Y. HUR (<i>Busan, Republic of Korea</i>).....	3449
PrPC Regulates the Cancer Stem Cell Properties <i>via</i> Interaction With c-Met in Colorectal Cancer Cells. J.H. LIM, G. GO, S.H. LEE (<i>Cheonan; Seoul; Asan, Republic of Korea</i>).....	3459
IL13 Fused <i>Pseudomonas</i> Exotoxin Targets Various Cancers <i>In Vitro</i> . D. ULUDAĞ, N. KARAKAŞ (<i>Istanbul, Turkey</i>)	3471
Inhibition of AKT Enhances the Sensitivity of NSCLC Cells to Metformin. S.-K. JANG, S.-E. HONG, D.-H. LEE, J.Y. KIM, J.-Y. KIM, J. HONG, I.-C. PARK, H.-O. JIN (<i>Seoul, Republic of Korea</i>).....	3481
<i>Clinical Studies</i>	
Radiotherapy as Elective Treatment of the Node-negative Neck in Oral Squamous Cell Cancer. E. LUNDIN, J. REIZENSTEIN, F. LANDSTROM, M. BERGQVIST, B. LENNERNAS, J. AHLGREN (<i>Örebro; Umeå; Gävle; Stockholm; Uppsala, Sweden</i>)	3489
Minimally Invasive <i>Versus</i> Open Ivor-Lewis Esophagectomy for Esophageal Cancer or Cancer of the Gastroesophageal Junction: Comparison of Postoperative Outcomes and Long-term Survival Using Propensity Score Matching Analysis. S. KNITTER, A. ANDREOU, T. HOFMANN, S. CHOPRA, C. DENECKE, P.C. THUSS-PATIENCE, D. KRÖLL, M. BAHRA, M. SCHMELZLE, J. PRATSCHKE, M. BIEBL (<i>Berlin, Germany; Bern, Switzerland</i>)	3499
Crypts in Asymmetric Fission in Endoscopic Biopsies from Swedish Patients With Inflammatory Bowel Disease. C.A. RUBIO, P.T. SCHMIDT (<i>Stockholm, Sweden</i>).....	3511
Neurological Complications After Electrochemotherapy Treatment in the Head and Neck Area. F. LANDSTRÖM, S. KRISTIANSO, P. APPELROS (<i>Örebro, Sweden</i>).....	3519
Analysis of Prognostic Factors Affecting Short-term and Long-term Outcomes of Gastric Cancer Resection. P. KULIG, P. NOWAKOWSKI, M. SIERZĘGA, R. PACH, O. MAJEWSKA, A. MARKIEWICZ, P. KOŁODZIEJCZYK, J. KULIG, P. RICHTER (<i>Chrzanow; Krakow, Poland</i>)	3523

Human IL-15 Inhibits NK Cells Specific for Human NK-92 Cells. H. BERGMAN, C. LINDQVIST (<i>Turku, Finland</i>).....	3281
Combination of CDK4/6 and mTOR Inhibitors Suppressed Doxorubicin-resistant Osteosarcoma in a Patient-derived Orthotopic Xenograft Mouse Model: A Translatable Strategy for Recalcitrant Disease. H. OSHIRO, Y. TOME, K. MIYAKE, T. HIGUCHI, N. SUGISAWA, F. KANAYA, K. NISHIDA, R.M. HOFFMAN (<i>San Diego, CA, USA; Okinawa, Japan</i>).....	3287
Calcipotriol Enhances Efficacy of Imatinib and Nilotinib on Cells Derived from Plexiform Neurofibroma. Y. ZHAO, M. YAN, V. MAUTNER, R. SMEETS, M. GOSAU, L. KLUWE, R.E. FRIEDRICH (<i>Hamburg, Germany</i>).....	3293
Heparanase Expression Is Associated With Cancer Stem Cell Features and Radioresistance in Hodgkin's Lymphoma Cells. F.M. TROSCHER, M. LINSSENMAIER, K. BORRMANN, H.T. EICH, M. GÖTTE, B. GREVE (<i>Münster, Germany</i>).....	3299
The Association of <i>MMP9</i> Promoter Rs3918242 Genotype With Gastric Cancer. C.-K. FU, W.-S. CHANG, C.-W. TSAI, Y.-C. WANG, M.-D. YANG, H.-S. HSU, C.-Y. CHAO, C.-C. YU, J.-C. CHEN, J.-S. PEI, D.-T. BAU (<i>Taichung; Taipei; Changhua; Taoyuan, Taiwan, ROC</i>).....	3309
FosL1 Regulates Regional Metastasis of Head and Neck Squamous Cell Carcinoma by Promoting Cell Migration, Invasion, and Proliferation. H. HYAKUSOKU, K. SAWAKUMA, D. SANO, H. TAKAHASHI, T. HATANO, K. SATO, Y. ISONO, S. SHIMADA, K. TAKADA, T. KUWAHARA, Y. AIZAWA, N. ORIDATE (<i>Yokohama; Yokosuka, Japan</i>).....	3317
Stage-specific Embryogenic Antigen-4 Expression in Castration-resistant Prostate Cancer and its Correlation With the Androgen Receptor. J. HARADA, Y. MIYATA, T. TAIMA, T. MATSUDA, Y. MUKAE, K. MITSUNARI, T. MATSUO, K. OHBA, T. SUDA, H. SAKAI, A. ITO, S. SAITO (<i>Nagasaki; Miyagi; Okinawa, Japan</i>).....	3327
Cranberry Extract Is a Potent Radiosensitizer for Glioblastoma. Q. BAI, Z.E. HUNZEKER, Z. ZHU, M. LEQUIO, C.M. WILLSON, H. XIAO, M.R. WAKEFIELD, Y. FANG (<i>Columbia, MO; Des Moines, IA, USA</i>).....	3337
Raspberry Extract With Potential Antitumor Activity Against Cervical Cancer. N. SHAM, C. QIN, Z. ZHU, C.G. REDINGTON, H. XIAO, Q. BAI, M.R. WAKEFIELD, L. KOU, Y. FANG (<i>Des Moines, IA; Columbia, MO, USA; Shenzhen, Guangdong, PR China</i>).....	3343
TACC3 Promotes Gastric Carcinogenesis by Promoting Epithelial-mesenchymal Transition Through the ERK/Akt/cyclin D1 Signaling Pathway. M.R. AKANDA, J.S. PARK, M.-G. NOH, G.-H. HA, Y.S. PARK, J.-H. LEE, K.-S. MOON, C.K. KIM, K.-H. LEE (<i>Jeollanam-do; Suwon; Gwangju; Seoul; Changwon, Republic of Korea; Sylhet, Bangladesh</i>).....	3349
PTEN Is Activated by the Addition of Cetuximab to Paclitaxel in Oral Squamous Cell Carcinoma. T. KII, K. SAKUMA, A. TANAKA (<i>Niigata, Japan</i>).....	3363
Experimental Comparison of the <i>In Vivo</i> Efficacy of Two Novel Anticancer Therapies. V.S. RUZANOVA, A.S. PROSKURINA, G.S. RITTER, Y.R. EFREMOV, V.P. NIKOLIN, N.A. POPOVA, V.A. NAPRIMEROV, E.V. DOLGOVA, E.A. POTTER, S.S. KIRIKOVICH, E.V. LEVITES, Z.S. MUSTAFIN, S.A. LASHIN, E.A. BURAKOVA, D.A. STETSENKO, A.A. OSTANIN, E.R. CHERNYKH, S.S. BOGACHEV (<i>Novosibirsk, Russian Federation</i>).....	3371
Five-(Tetradecyloxy)-2-furoic Acid Alleviates Cholangiocarcinoma Growth by Inhibition of Cell-cycle Progression and Induction of Apoptosis. P. BOONNATE, R. KARIYA, P. SARANARUK, U. CHA'ON, K. SAWANYAWISUTH, S. JITRAPAKDEE, S. OKADA, K. VAETEEWOOTTACHARN (<i>Khon Kaen; Bangkok, Thailand; Kumamoto, Japan</i>).....	3389