

Instructions for Authors 2018

General Policy. ANTICANCER RESEARCH (AR) will accept original high quality works and reviews on all aspects of experimental and clinical cancer research. The Editorial Policy suggests that priority will be given to papers advancing the understanding of cancer causation, and to papers applying the results of basic research to cancer diagnosis, prognosis, and therapy. AR will also accept the following for publication: (a) Abstracts and Proceedings of scientific meetings on cancer, following consideration and approval by the Editorial Board; (b) Announcements of meetings related to cancer research; (c) Short reviews (of approximately 120 words) and announcements of newly received books and journals related to cancer, and (d) Announcements of awards and prizes.

The principal aim of AR is to provide prompt publication (print and online) for original works of high quality, generally within 1-2 months from final acceptance. Manuscripts will be accepted on the understanding that they report original unpublished works in the field of cancer research that are not under consideration for publication by another journal, and that they will not be published again in the same form. All authors should sign a submission letter confirming the approval of their article contents. All material submitted to AR will be subject to peer-review, when appropriate, by two members of the Editorial Board and by one suitable outside referee. All manuscripts submitted to AR are urgently treated with absolute confidence, with access restricted to the Managing Editor, the journal's secretary, the reviewers and the printers. The Editors reserve the right to improve manuscripts on grammar and style.

The Editors and Publishers of AR accept no responsibility for the contents and opinions expressed by the contributors. Authors should warrant due diligence in the creation and issuance of their work.

NIH Open Access Policy. The journal acknowledges that authors of NIH-funded research retain the right to provide a copy of the published manuscript to the NIH four months after publication in ANTICANCER RESEARCH, for public archiving in PubMed Central.

Copyright. Once a manuscript has been published in ANTICANCER RESEARCH, which is a copyrighted publication, the legal ownership of all published parts of the paper has been transferred from the Author(s) to the journal. Material published in the journal may not be reproduced or published elsewhere without the written consent of the Managing Editor or Publisher.

Format. Two types of papers may be submitted: (i) Full papers containing completed original work, and (ii) review articles concerning fields of recognisable progress. Papers should contain all essential data in order to make the presentation clear. Reasonable economy should be exercised with respect to the number of tables and illustrations used. Papers should be written in clear, concise English. Spelling should follow that given in the "Shorter Oxford English Dictionary".

Manuscripts. Submitted manuscripts should not exceed fourteen (14) pages (approximately 250 words per double – spaced typed page), including abstract, text, tables, figures, and references (corresponding to 4 printed pages). Papers exceeding 4 printed pages will be subject to excess page charges. All manuscripts should be divided into the following sections: (a) *First page* including the title of the presented work [not exceeding fifteen (15) words], full names and full postal addresses of all Authors, name of the Author to whom proofs are to be sent, key words, an abbreviated running title, an indication "review", "clinical", "epidemiological", or "experimental" study, and the date of submission. (Note: The order of the Authors is not necessarily indicative of their contribution to the work. Authors may note their individual contribution(s) in the appropriate section(s) of the presented work); (b) *Abstract* not exceeding 150 words, organized according to the following headings: Background/Aim – Materials and Methods/Patients and Methods – Results – Conclusion; (c) *Introduction*; (d) *Materials and Methods/Patients and Methods*; (e) *Results*; (f) *Discussion*; (g) *Acknowledgements*; (h) *References*. All pages must be numbered consecutively. Footnotes should be avoided. Review articles may follow a different style according to the subject matter and the Author's opinion. Review articles should not exceed 35 pages (approximately 250 words per double-spaced typed page) including all tables, figures, and references.

Figures. All figures should appear at the end of the submitted document file. Once a manuscript is accepted all figures and graphs should be submitted separately in either jpg, tiff or pdf format and at a minimum resolution of 300 dpi. Graphs must be submitted as pictures made from drawings and must not require any artwork, typesetting, or size modifications. Symbols, numbering and lettering should be clearly legible. The number and top of each figure must be indicated. Pages that include color figures are subject to color charges..

Tables. All tables should appear at the end of the submitted document file. Once a manuscript is accepted, each table should be submitted separately, typed double-spaced. Tables should be numbered with Roman numerals and should include a short title.

References. Authors must assume responsibility for the accuracy of the references used. Citations for the reference sections of submitted works should follow the standard form of "Index Medicus" and must be numbered consecutively. In the text, references should be cited by number. Examples: 1 Sumner AT: The nature of chromosome bands and their significance for cancer research. *Anticancer Res* 1: 205-216, 1981. 2 McGuire WL and Chamnes GC: Studies on the oestrogen receptor in breast cancer. In: *Receptors for Reproductive Hormones* (O' Malley BW, Chamnes GC (eds.)). New York, Plenum Publ Corp., pp 113-136, 1973.

Nomenclature and Abbreviations. Nomenclature should follow that given in “Chemical Abstracts”, “Index Medicus”, “Merck Index”, “IUPAC -IUB”, “Bergey’s Manual of Determinative Bacteriology”, The CBE Manual for Authors, Editors and Publishers (6th edition, 1994), and MIAME Standard for Microarray Data. Human gene symbols may be obtained from the HUGO Gene Nomenclature Committee (HGNC) (<http://www.gene.ucl.ac.uk/>). Approved mouse nomenclature may be obtained from <http://www.informatics.jax.org/>. Standard abbreviations are preferable. If a new abbreviation is used, it must be defined on first usage.

Clinical Trials. Authors of manuscripts describing clinical trials should provide the appropriate clinical trial number in the correct format in the text.

For International Standard Randomised Controlled Trials (ISRCTN) Registry (a not-for-profit organization whose registry is administered by Current Controlled Trials Ltd.) the unique number must be provided in this format: ISRCTNXXXXXXXX (where XXXXXXXX represents the unique number, always prefixed by “ISRCTN”). Please note that there is no space between the prefix “ISRCTN” and the number. Example: ISRCTN47956475.

For Clinicaltrials.gov registered trials, the unique number must be provided in this format: NCTXXXXXXXX (where XXXXXXXX represents the unique number, always prefixed by ‘NCT’). Please note that there is no space between the prefix ‘NCT’ and the number. Example: NCT00001789.

Ethical Policies and Standards. ANTICANCER RESEARCH agrees with and follows the “Uniform Requirements for Manuscripts Submitted to Biomedical Journals” established by the International Committee of Medical Journal Editors in 1978 and updated in October 2001 (www.icmje.org). Microarray data analysis should comply with the “Minimum Information About Microarray Experiments (MIAME) standard”. Specific guidelines are provided at the “Microarray Gene Expression Data Society” (MGED) website. Presentation of genome sequences should follow the guidelines of the NHGRI Policy on Release of Human Genomic Sequence Data. Research involving human beings must adhere to the principles of the Declaration of Helsinki and Title 45, U.S. Code of Federal Regulations, Part 46, Protection of Human Subjects, effective December 13, 2001. Research involving animals must adhere to the Guiding Principles in the Care and Use of Animals approved by the Council of the American Physiological Society. The use of animals in biomedical research should be under the careful supervision of a person adequately trained in this field and the animals must be treated humanely at all times. Research involving the use of human fetuses, foetal tissue, embryos and embryonic cells should adhere to the U.S. Public Law 103-41, effective December 13, 2001.

Submission of Manuscripts. Please follow the Instructions for Authors regarding the format of your manuscript and references. Manuscripts must be submitted only through our online submission system at: <http://www.iar-submissions.com/login.html>. In case a submission is incomplete, the corresponding Author will be notified accordingly. Questions regarding difficulties in using the online submission system should be addressed to: email: journals@iar-anticancer.org

Galley Proofs. Unless otherwise indicated, galley proofs will be sent to the corresponding Author of the submission. Corrections of galley proofs should be limited to typographical errors. Reprints, PDF files, and/or Open Access may be ordered after the acceptance of the paper. Authors of online open access articles are entitled to a complimentary online subscription to Anticancer Research for the current year and all previous digital content since 2004. Requests should be addressed to the Editorial Office. Galley proofs should be returned corrected to the Editorial Office by email within two days.

Specific information and additional instructions for Authors

1. Anticancer Research (AR) closely follows the new developments in all fields of experimental and clinical cancer research by (a) inviting reviews on topics of immediate importance and substantial progress in the last three years, and (b) providing the highest priority for rapid publication to manuscripts presenting original results judged to be of exceptional value. Theoretical papers will only be considered and accepted if they bear a significant impact or formulate existing knowledge for the benefit of research progress.
2. Anticancer Research will consider the publication of conference proceedings and/or abstracts provided that the material submitted fulfils the quality requirements and instructions of the journal, following the regular review process by two suitable referees.
3. An acknowledgement of receipt, including the article number, title and date of receipt is sent to the corresponding author of each manuscript upon receipt. If this receipt is not received within 20 days from submission, the author should call or write to the Editorial Office to ensure that the manuscript (or the receipt) was not lost in the mail or during electronic submission.
4. Each manuscript submitted to AR is sent for review in confidence to two suitable referees with the request to return the manuscript with their comments to the Editorial Office within 12 days from receipt. If reviewers need a longer time or wish to send the manuscript to another expert, the manuscript may be returned to the Editorial Office with a delay. All manuscripts submitted to AR, are treated in confidence, without access to any person other than the Managing Editor, the journal’s secretary, the reviewers and the printers.

5. All accepted manuscripts are peer-reviewed and carefully corrected in style and language, if necessary, to make presentation clear. (There is no fee for this service). Every effort is made (a) to maintain the personal style of the author's writing and (b) to avoid change of meaning. Authors will be requested to examine carefully manuscripts which have undergone language correction at the pre-proof or proof stage.
6. Authors should pay attention to the following points when writing an article for AR:
 - The Instructions to Authors must be followed in every detail.
 - The presentation of the experimental methods should be clear and complete in every detail facilitating reproducibility by other scientists.
 - The presentation of results should be simple and straightforward in style. Results and discussion should not be combined into one section, unless the paper is short.
 - Results given in figures should not be repeated in tables.
 - Figures (graphs or photographs) should be prepared at a width of 8 or 17 cm with legible numbers and lettering.
 - Photographs should be clear with high contrast, presenting the actual observation described in the legend and in the text. Each legend should provide a complete description, being self-explanatory, including technique of preparation, information about the specimen and magnification.
 - Statistical analysis should be elaborated wherever it is necessary. Simplification of presentation by giving only numerical or % values should be avoided.
 - Fidelity of the techniques and reproducibility of the results, should be points of particular importance in the discussion section. Authors are advised to check the correctness of their methods and results carefully before writing an article. Probable or dubious explanations should be avoided.
 - Authors should not cite results submitted for publication in the reference section. Such results may be described briefly in the text with a note in parenthesis (submitted for publication by... authors, year).
 - The References section should provide as complete a coverage of the literature as possible including all the relevant works published up to the time of submission.
 - By following these instructions, Authors will facilitate a more rapid review and processing of their manuscripts and will provide the readers with concise and useful papers.
7. Following review and acceptance, a manuscript is examined in language and style, and galley proofs are rapidly prepared. Second proofs are not sent unless required.
8. Authors should correct their galley proofs very carefully and preferably twice. An additional correction by a colleague always proves to be useful. Particular attention should be paid to chemical formulas, mathematical equations, symbols, medical nomenclature etc. Any system of correction marks can be used in a clear manner, preferably with a red pen. Additions or clarifications are allowed provided that they improve the presentation but do not bring new results (no fee).
9. Articles submitted to AR may be rejected without review if:
 - they do not fall within the journal's policy.
 - they do not follow the instructions for authors.
 - language is unclear.
 - results are not sufficient to support a final conclusion.
 - results are not objectively based on valid experiments.
 - they repeat results already published by the same or other authors before the submission to AR.
 - plagiarism is detected by plagiarism screening services.

(Rejection rate (2016): 66%).
10. Authors who wish to prepare a review should contact the Managing Editor of the journal in order to get confirmation of interest in the particular topic of the review. The expression of interest by the Managing Editor does not necessarily imply acceptance of the review by the journal.
11. Authors may inquire information about the status of their manuscript(s) by calling the Editorial Office at +30-22950-53389, Monday to Friday 9.00-16.00 (Athens time), or by sending an e-mail to journals@iia-anticancer.org
12. Authors who wish to edit a special issue on a particular topic should contact the Managing Editor.
13. Authors, Editors and Publishers of books are welcome to submit their books for immediate review in AR. There is no fee for this service. (This text is a combination of advice and suggestions contributed by Editors, Authors, Readers and the Managing Editor of AR).

Copyright© 2018 - International Institute of Anticancer Research (G.J. Delinasios). All rights reserved (including those of translation into other languages). No part of this journal may be reproduced, stored in a retrieval system, or transmitted in any form or by any means, electronic, mechanical, photocopying, microfilming, recording or otherwise, without written permission from the Publisher.

Contents

Reviews

Pathophysiological Mechanisms of Renal Fibrosis: A Review of Animal Models and Therapeutic Strategies. A. NOGUEIRA, M.J. PIRES, P.A. OLIVEIRA (Vila Real, Braga, Portugal)	1
Prevalence of EGFR Tyrosine Kinase Domain Mutations in Head and Neck Squamous Cell Carcinoma: Cohort Study and Systematic Review. C. PERISANIDIS (Vienna, Austria)	23
Clinical Factors Associated with Treatment Outcomes Following Whole-brain Irradiation in Patients with Prostate Cancer. L. DZIGGEL, S.E. SCHILD, T. VENINGA, A. BAJROVIC, D. RADES (Lübeck/Hamburg, Germany; Scottsdale, AZ, USA; Tilburg, the Netherlands)	35
Experimental Studies	
Effectiveness of Analogs of the GS-Nitroside, JPI-039, as Total Body Irradiation Mitigators. M.W. EPPERLY, J.R. SACHER, T. HRANIZ, X. ZHANG, P. WIPP, M. LIANG, R. FISHER, S. LI, H. WANG, J.S. GREENBERGER (Pittsburgh, PA, USA)	39
Active and Passive Immunization Against <i>Staphylococcus aureus</i> Periprosthetic Osteomyelitis in Rats. N.H.SØE, N.V. JENSEN, A.L. JENSEN, J. KOCH, S.S. POULSEN, G.B. PIER, H.K. JOHANSEN (Hallerup, Copenhagen; Hørsholm, Denmark; Boston, MA, USA)	45
Gene Expression Analysis of Cultured Rat-Endothelial Cells after Nd:YAG Laser Irradiation by Affymetrix GeneChip Array. Y. MASUDA, S. YOKOSE, H. SAKAGAMI (Saitama, Japan)	51
Wound Healing Delay in the ZSD Rat. M.A. SUCKOW, T.A. GOBBETT, R.G. PETERSON (St. Paul, MN; Indianapolis, IN, USA)	55
Pulsed Electromagnetic Field Stimulation Promotes Anti-cell Proliferative Activity in Doxorubicin-treated Mouse Osteosarcoma Cells. Y. MURAMATSU, T. MATSUI, M. DEBE, K. SATO (Aichi, Japan)	61

Content continued on the back cover

ISSN (online): 1791-7549

General Policy

- **IN VIVO** is a multidisciplinary journal designed to bring together original high quality works and reviews on experimental and clinical biomedical research within the frames of human physiology, pathology and disease management. A special focus of the journal is the publication of works on: (a) Experimental development and application of new diagnostic procedures; (b) Pharmacological and toxicological evaluation of new drugs and drug combinations; (c) Clinical trials; (d) Development and characterization of models of biomedical research.
- The principal aim of **IN VIVO** is to provide prompt online publication for accepted articles, generally within 1-2 months from final acceptance.
- **Editorial Office:** International Institute of Anticancer Research, 1st km Kapandritiou-Kalamou Rd., P.O. Box 22, Kapandriti, Attiki 19014, Greece. Tel: +30 22950 52945, Fax: +30 22950 53389.

U.S. Branch: Anticancer Research Inc., USA, 111 Bay Avenue, Highlands, NJ, USA.

- **E-mail:** journals@iia-anticancer.org; IIA WEBSITES: www.iia-anticancer.org and www.iiajournals.org

- **International Journal of Experimental and Clinical Pathophysiology and Drug Research**
- **Published bimonthly by the International Institute of Anticancer Research**
- **Available online only and open access with Stanford University HighWire Press**

● Selection of Recent Articles

Challenges in the Analysis of Outcomes for Surgical Compared to Radiotherapy Treatment of Prostate Cancer. S.M. GLASER, R. KALASH, D.R. BONGIORNI, M.S. ROBERTS, G.K. BALASUBRAMANI, B.L. JACOBS, S. BERIWAL, D.E. HERON, J.S. GREENBERGER (Duarte, CA; Pittsburgh, PA, USA)

Morphological Distinction of Histiocytic Sarcoma from Other Tumor Types in Bernese Mountain Dogs and Flatcoated Retrievers. S.A. ERICH, F. CONSTANTINO-CASAS, J.M. DOBSON, E. TESKE (Utrecht, The Netherlands; Cambridge, UK)

Tissue-directed Implantation Using Ultrasound Visualization for Development of Biologically Relevant Metastatic Tumor Xenografts. R.A. VAN NOORD, T. THOMAS, M. KROOK, S. CHUKKAPALLI, M.J. HOENERHOFF, J.R. DILLMAN, E.R. LAWLOR, V.P. OPIPARI, E.A. NEWMAN (Ann Arbor, MI, USA)

Re-evaluation of Culture Condition of PC12 and SH-SY5Y Cells Based on Growth Rate and Amino Acid Consumption. H. SAKAGAMI, R. SUZUKI, Y. SHIRATAKI, S. IWAMA, M. NAKAGAWA, H. SUZUKI, K. TANAKA, N. TAMURA, H. TAKESHIMA (Sakado, Japan)

Clinical Impact of Rest Dual-Energy Computed Tomography Myocardial Perfusion in Patients with Coronary Artery Disease. S. BAUMANN, *et al.* (Mannheim, Germany)

Effects of 2,3-Bis(4-hydroxyphenyl)-propionitrile on Induction of Polyovular Follicles in the Mouse Ovary. T. SATO, H. KIM, H. KAKUTA, T. IGUCHI (Yokohama, Japan)

Cell-cycle Checkpoints and Aneuploidy on the Path to Cancer. E.S. WENZEL, A.T.K. SINGH (Kenosha, WI, USA)

The Association of MMP-8 Genotypes with Pterygium. P.-S. HU, W.-S. CHANG, A.-K. CHOU, N.-Y. HSIA, Y.-W. HUNG, C.-W. LIN, C.-W. WU, C.-Y. HUANG, M.-F. WU, C.-H. LIAO, C.-W. TSAI, D.-T. BAU, C.-L. GONG (Changhua; Taichung; Taoyuan, Taiwan, ROC)

Profiling Neutrophil-to-Lymphocyte Ratio Changes in Response to Nucleoside Analog Therapy for Chronic Hepatitis B Infection. M. MARALLAG, A. PATEL, M. CHOI, M.N. WONG, A.B. SEETHARAM (Phoenix; Tempe, AZ, USA)

Comparison of the Grip Strength Using the Martin-Vigrometer and the JAMAR-Dynamometer: Establishment of Normal Values. S. NEUMANN, S. KWISDA, C. KRETTEK, R. GAULKE (Hannover; Hamburg, Germany; Zurich, Switzerland)

Role for Neutrophil Extracellular Traps (NETs) and Platelet Aggregation in Early Sepsis-induced Hepatic Dysfunction. K. SAKURAI, T. MIYASHITA, *et al.* (Ishikawa, Japan; Baltimore, MD, USA)

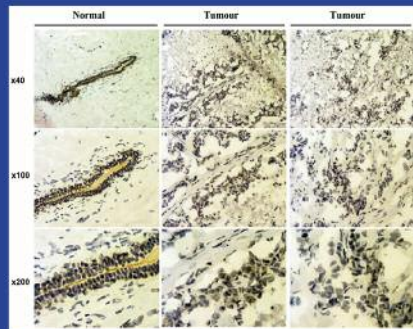
Netrin-4 Promotes Differentiation and Migration of Osteoblasts. Y. ENOKI, T. SATO, S. KOKABU, N. HAYASHI, T. IWATA, M. YAMATO, M. USUI, M. MATSUMOTO, T. TOMODA, W. ARIYOSHI, T. NISHIHARA, T. YODA (Saitama; Fukuoka; Tokyo, Japan)

Early PET-CT After Stereotactic Radiotherapy for Stage I Non-small-cell Lung Carcinoma Is Predictive of Local Control. M. TYRAN, N. CHARRIER, J. DARREON, A. MADROSZYK, A. TALLET, N. SALEM (Marseille, France)

Plasma Electrolytic Oxidation of Titanium Implant Surfaces: Microgroove-Structures Improve Cellular Adhesion and Viability. P. HARTJEN, A. HOFFMANN, A. HENNINGSSEN, M. BARBECK, A. KOPP, L. KLUWE, C. PRECHT, O. QUATELA, R. GAUDIN, M. HEILAND, R.E. FRIEDRICH, D. GRUBEANU, R. SMEETS, O. JUNG (Hamburg-Eppendorf; Idstein; Berlin; Aachen, Germany)

CANCER GENOMICS & PROTEOMICS

ISSN (online): 1790-6245



Published by the International Institute of Anticancer Research

Online ISSN: 1790-6245

General Policy

- **CANCER GENOMICS & PROTEOMICS (CGP)** welcomes submissions of original high quality articles and reviews on all aspects of the application of genomic and proteomic technologies to experimental and clinical cancer research. The journal's scientific spectrum includes: (a) molecular causes of carcinogenesis, cancer progression and metastasis; (b) structural and functional aspects of genes in the cancer cell; (c) advances in genomic and proteomic technologies applicable to cancer research; (d) anticancer drug design and drug development. A main aim of CGP is to ensure the prompt and confidential review, and rapid publication of original works and reviews, generally within 1-3 months from submission.
- CGP is published bimonthly by the **International Institute of Anticancer Research (IIAR)** and is available online only and open access with **Stanford University HighWire Press**. The IIAR is a member of UICC. For more information please visit our website www.cgp.iiarjournals.org.
- **Editorial Office:** International Institute of Anticancer Research, 1st km Kapandritiou-Kalamou Rd., P.O. Box 22, Kapandriti, Attiki 19014, Greece. Tel: +30 22950 52945, Fax: +30 22950 53389.
U.S. Branch: Anticancer Research Inc., USA, 111 Bay Avenue, Highlands, NJ, USA.
- **E-mail:** journals@iiar-anticancer.org; IIAR WEBSITES: www.iiar-anticancer.org and www.iiarjournals.org

● Selection of Recent Articles

The Role of micro RNAs in Breast Cancer Metastasis: Preclinical Validation and Potential Therapeutic Targets. U.H. WEIDLE, S. DICKOPF, C. HINTERMAIR, G. KOLLMORGEN, F. BIRZELE, U. BRINKMANN (*Penzberg; Munich, Germany; Basel, Switzerland*)

Transcriptomic Profiling of MDA-MB-231 Cells Exposed to *Boswellia Serrata* and 3-O-Acetyl-B-Boswellic Acid; ER/UPR Mediated Programmed Cell Death. M.A. ELIZABETH, L.A. CHARLES, SOLIMAN F.A. KARAM (*Tallahassee, FL, USA*)

Screening for Multiple Autoantibodies in Plasma of Patients with Breast Cancer. L. BASSARO, S.J. RUSSELL, E. PASTWA, S.A. SOMIARI, R.I. SOMIARI (*Johnstown; Windber, PA, USA*)

DHPLC elution Patterns of VDR PCR Products Can Predict Prostate Cancer Susceptibility in African American Men. R.L. COPELAND, D. BEYENE, V. APPREY, M.R. DAREMPOURAN, T.J. NAAB, O.O. KASSIM, Y.M. KANAAN (*Washington, DC, USA*)

Characterization of Camptothecin-induced Genomic Changes in the Camptothecin-resistant T-ALL Derived Cell Line CPT-K5. E. KJELDSEN, C.J.F. NIELSEN, A. ROY, C. TESAURO, A.-K. JAKOBSEN, M. STOUGAARD, B.R. KNUDSEN (*Aarhus, Denmark*)

Regulation of β -Catenin Phosphorylation by PR55 β in Adenoid Cystic Carcinoma. K. ISHIBASHI, K. ISHII, G. SUGIYAMA, Y. KAMATA, A. SUZUKI, W. KUMAMARU, Y. OHYAMA, H. NAKANO, T. KIYOSHIMA, T. SUMIDA, T. YAMADA, Y. MORI (*Fukuoka, Japan*)

Admixture Mapping Links RACGAP1 Regulation to Prostate Cancer in African Americans. B.D. WILSON, L.J. RICKS-SANTI, T.E. MASON, M. ABBAS, R.A. KITTLES, G.M. DUNSTON, Y.M. KANAAN (*Washington, DC; Hampton, VA; Duarte, CA, USA*)

Consistent Involvement of Chromosome 13 in Angiolipoma. I. PANAGOPOULOS, L. GORUNOVA, K. ANDERSEN, I. LOBMAIER, B. BJERKEHAGEN, S. HEIM (*Oslo, Norway*)

Analysis of K-Ras Interactions by Biotin Ligase Tagging. C. RITCHIE, A. MACK, L. HARPER, A. ALFADHLI, P.J.S. STORK, X. NAN, E. BARKLIS (*Portland, OR, USA*)

CYP3A4 Gene Is a Novel Biomarker for Predicting a Poor Prognosis in Hepatocellular Carcinoma. R. ASHIDA, Y. OKAMURA, K. OHSHIMA, Y. KAKUDA, K. UESAKA, T. SUGIURA, T. ITO, Y. YAMAMOTO, T. SUGINO, K. URAKAMI, M. KUSUHARA, K. YAMAGUCHI (*Shizuoka; Tokyo, Japan*)

Subscription Order Form 2018

- Please enter a Subscription to ANTICANCER RESEARCH Volume 38 (2018).
 Annual subscription rates (2018): Institutional, US\$ 1898.00 online, US\$ 2277.00 online & print; Personal, US\$ 897.00 online; US\$ 1277.00 online & print; Prices include rapid delivery and insurance.
 2018 online subscriptions include free online access to vol. 24 (2004) - 37 (2017).
- Please send me the following previous volumes (1-37) at 50% discount on the above rates:
- Please invoice.
- Please send me information about the International Institute of Anticancer Research (IIAR).

Name and Address:

.....

Tel:

Fax: e-mail:

Signature:..... Date:.....

Please send this order to ANTICANCER RESEARCH, Subscription Office, IIAR, 1st km Kapandritiou-Kalamou Rd., Kapandriti, P.O. Box 22, Attiki, 19014, Greece. Tel & Fax: +30-22950-53389, e-mail: subscriptions@iiar-anticancer.org

Special 2018 Offers to Authors of ANTICANCER RESEARCH

(These offers are open to all authors of articles published in Anticancer Research from 1981-2018 on a basis of priority and availability. Effective from January to December 2018).

- **Included in PubMed, Current Contents and all abstracting and indexing services**
- **Online with Stanford University HighWire Press**
- **Open access articles**



Your link to the essential information on cancer research published in the last 37 years.

- 1981-2017
- 37 volumes
- over 131,300 pages
- over 19,300 original articles
- 993 reviews
- over 90,000 authors
- Conference abstracts
- Special issues
- Book reviews
- Author-Subject Indexes
- Rapid publication
- No fees for language and style corrections

Please complete and send this order form to:

ANTICANCER RESEARCH, International Institute of Anticancer Research, 1st km Kapandritiou-Kalamou Rd., Kapandriti, P.O. Box 22, Attiki, 19014, Greece. e-mail: subscriptions@iiar-anticancer.org

Special Subscription Order Form 2018

- I am one of the authors of the article published in Anticancer Research Vol....., pp., year
- Please enter my personal subscription to Anticancer Research 2018 (Volume 38) at the special Author's rate of US\$ 465.00 (print or online).
- Please send me previous Volume No(s) at US\$ 224.00 (print) per volume.
- Please send me an invoice.
 Prices include rapid delivery and insurance.

Name and address:

.....

Tel-Fax:

e-mail:

Date and signature:

Elevated Neutrophil-to-Lymphocyte Ratio Predicts Survival in Patients with Advanced Gastric Cancer Treated with Trastuzumab Combination Chemotherapy. G.Y. HWANG, D.W. BAEK, H.J. CHO, S.J. LEE, Y.S. CHAE, B.W. KANG, I.H. LEE, J.G. KIM, A.N. SEO, H.I. BAE, K.B. PARK, J.Y. PARK, O.K. KWON, S.S. LEE, H.Y. CHUNG (<i>Daegu, Republic of Korea</i>)	3151
Elevated Neutrophil-to-Lymphocyte-ratio and Platelet-to-Lymphocyte Ratio in Myelofibrosis: Inflammatory Biomarkers or Representatives of Myeloproliferation Itself? M. LUCIJANIC, D. CICIC, T. STOOS-VEIC, V. PEJSA, J. LUCIJANIC, A.F. DZANKIC, J.V. GLASNOVIC, E. SORIC, M. SKELIN, R. KUSEC (<i>Zagreb; Osijek; Sisak; Sibenik, Croatia</i>)	3157
Re-irradiation Using Intensity-modulated Radiotherapy for Recurrent and Second Primary Head and Neck Cancer. S.H. CHOI, J.S. CHANG, J. CHOI, S.H. PARK, K.C. KEUM, K.R. PARK, C.G. LEE (<i>Seoul, Republic of Korea; Seattle, WA, USA</i>)	3165
Utilization of Hysterectomy Following Chemoradiation for IB2/IIA2 Cervical Cancer in the National Cancer Data Base. W. HAQUE, V. VERMA, E.B. BUTLER, B.S. TEH (<i>Houston, TX; Pittsburgh, PA, USA</i>)	3175
The Emerging Role of Laparoscopic Liver Resection in the Treatment of Recurrent Hepatocellular Carcinoma: A Systematic Review. N. MACHAIRAS, D. PAPACONSTANTINO, P. STAMOPOULOS, A. PRODROMIDOU, Z. GAROUFALIA, E. SPARTALIS, I.D. KOSTAKIS, G.C. SOTIROPOULOS (<i>Athens, Greece</i>)	3181
Renal Pelvis Carcinoma with Renal Vein or Inferior Vena Cava Involvement Linked to Early-onset Lung Metastasis Based on CT Scan Diagnosis. T.-Y. LIAO, C.-C. LIAW, K.-H. TSUI, Y.-H. JUAN (<i>Taoyuan, Taiwan, ROC</i>)	3187
Prognostic Impact of Postoperative C-reactive Protein for Non-small Cell Lung Cancer Following Lobectomy. S. SHINOHARA, M. SUGAYA, T. ONITSUKA, K. MACHIDA, M. MATSUO, F. TANAKA (<i>Nagoya; Kitakyushu, Japan</i>)	3193
The Role of Soluble CD40L Ligand in Human Carcinogenesis. A. ANGELOU, E. ANTONIOU, N. GARMPI, C. DAMASKOS, S. THEOCHARIS, G.-A. MARGONIS (<i>Athens, Greece; Baltimore, MD, USA</i>)	3199
Book Reviews	3203

Recent Trends in HPV Infection and Type Distribution in Greece. E. ARGYRI, E. TSIMPLAKI, D. PAPTODOROU, D. DASKALOPOULOU, E. PANOTOPOULOU (<i>Athens, Greece</i>).....	3079
Successful Distal Gastrectomy for Gastric Cancer with Child-Pugh Class B Alcoholic Liver Cirrhosis. J. IWABU, T. NAMIKAWA, S. TSUDA, H. KITAGAWA, M. KOBAYASHI, K. HANAZAKI (<i>Kochi, Japan</i>).....	3085
Liver Function in Areas of Hepatic Venous Congestion After Hepatectomy for Liver Cancer: ^{99m} Tc-GSA SPECT/CT Fused Imaging Study. M. YOSHIDA, T. BEPPU, S. SHIRAISHI, N. TSUDA, F. SAKAMOTO, K. KURAMOTO, H. OKABE, H. NITTA, K. IMAI, S. TOMIGUCHI, H. BABA, Y. YAMASHITA (<i>Amakusa; Kumamoto; Yamaga, Japan</i>).....	3089
A Genitourinary Cancer-specific Scoring System for the Prediction of Survival in Patients with Bone Metastasis: A Retrospective Analysis of Prostate Cancer, Renal Cell Carcinoma, and Urothelial Carcinoma. T. OWARI, M. MIYAKE, Y. NAKAI, Y. MORIZAWA, S. HORI, S. ANAI, N. TANAKA, K. FUJIMOTO (<i>Kashihara, Japan</i>).....	3097
Relationship and Predictive Role of the Dual Expression of FGFR and IL-8 in Metastatic Renal Cell Carcinoma Treated with Targeted Agents. R. IACOVELLI, M. DE TURSI, C. MOSILLO, A. CIARDI, C. CARELLA, C. NATOLI, G. NASO, E. CORTESI (<i>Verona; Chieti; Rome, Italy</i>).....	3105
A Score to Identify Patients with Brain Metastases from Colorectal Cancer Who May Benefit from Whole-brain Radiotherapy in Addition to Stereotactic Radiosurgery/Radiotherapy. D. RADES, L. DZIGGEL, O. BLANCK, N. GEBAUER, T. BARTSCHT, S.E. SCHILD (<i>Lübeck; Güstrow, Germany; Scottsdale, AZ, USA</i>).....	3111
Successful Treatment of Growing Teratoma Syndrome of the Lung by Surgical Resection: A Case Report and Literature Review. K. TANAKA, G. TOYOKAWA, T. TAGAWA, K. IJICHI, N. HARATAKE, F. HIRAI, Y. ODA, Y. MAEHARA (<i>Fukuoka, Japan</i>).....	3115
Image-guided Stereotactic Body Radiotherapy in Metastatic Prostate Cancer. F. PASQUALETTI, M. PANICHI, A. SAINATO, D. BALDACCINI, P. COCUZZA, A. GONNELLI, S. MONTRONE, A. MOLINARI, S. BARBIERO, A. BRUSCHI, E. NOTINI, S. URSINO, V. MAZZOTTI, R. MORGANTI, G. CORAGGIO, M. CANTARELLA, P.A. ERBA, F. PAIAR (<i>Pisa, Italy; Créteil, France</i>).....	3119
Genomic Instability in Buccal Mucosal Cells of Municipal Street Sweepers as Evaluated by Micronucleus Test. V.H.P. DA SILVA, M.C. ANDRADE, S.R. CLAUDIO, V.Q. YUJRA, M.E.S. ALPIRE, J.N. DOS SANTOS, P.R. CURY, D.A. RIBEIRO (<i>Santos; Salvador, Brazil</i>).....	3123
Transition Rate from EGFR-TKI to Cytotoxic Chemotherapy Patients with EGFR Mutation-positive Lung Adenocarcinoma. Y. KAWAGUCHI, T. OKANO, M. KAKIHANA, N. KAJIWARA, T. OHIRA, N. IKEDA (<i>Tokyo, Japan</i>).....	3127
Long-term Postoperative Nutritional Status Affects Prognosis Even After Infectious Complications in Gastric Cancer. J. KIUCHI, S. KOMATSU, T. KOSUGA, T. KUBOTA, K. OKAMOTO, H. KONISHI, A. SHIOZAKI, H. FUJIWARA, D. ICHIKAWA, E. OTSUJI (<i>Kyoto; Chuo, Japan</i>).....	3133
Radiotherapy Plus Total Androgen Block Versus Radiotherapy Plus LHRH Analog Monotherapy for Non-metastatic Prostate Cancer. G. MARVASO, A. VIOLA, C. FODOR, B.A. JERECZEK-FOSSA (<i>Milan, Italy</i>).....	3139
Acquired EGFR T790M Mutation After Relapse Following EGFR-TKI Therapy: A Population-based Multi-institutional Study. T. KABURAGI, M. KIYOSHIMA, T. NAWA, H. ICHIMURA, T. SAITO, K. HAYASHIHARA, H. YAMADA, H. SATOH, T. ENDO, Y. INAGE, K. SAITO, M. INAGAKI, N. HIZAWA, Y. SATO, H. ISHIKAWA, M. SAKAI, K. KAMIYAMA, N. KIKUCHI, H. NAKAMURA, K. FURUKAWA, T. KODAMA, T. YAMASHITA, A. NOMURA, S. YOSHIDA (<i>Kasama; Hitachi; Tokai; Hitachinaka; Mito; Tsuchiura; Tsukuba; Ami-machi; Ryugasaki; Toride; Sakai-machi, Japan</i>).....	3145

Osteoscopic Surgery of Giant Cell Tumor of Bone for Preservation of Proximal Fibula. H. FUTANI, S. KUMANISHI, G. MINAKAWA, S. YOSHIYA (<i>Nishinomiya, Japan</i>)	2995
Clinical Significance of Subcellular Localization of Maspin in Patients with Pathological Stage IA Lung Adenocarcinoma. T. OHNO, Y. KUBOUCHI, M. WAKAHARA, K. NOSAKA, T. SAKABE, T. HARUKI, K. MIWA, Y. TANIGUCHI, H. NAKAMURA, Y. UMEKITA (<i>Tottori, Japan</i>)	3001
Synchronous Pancreatic Ductal Adenocarcinoma and Hepatocellular Carcinoma: Report of a Case and Review of the Literature. J.Z. LAI, Y. ZHOU, D. CAO (<i>St. Louis, MO; Pittsburgh, PA, USA</i>)	3009
Cytoreductive Nephrectomy in Elderly Patients with Metastatic Renal Cell Carcinoma in the Targeted Therapy Era. D. UPRETY, A. BISTA, A.L. SMITH, Y. VALLATHARASU, D.E. MARINIER (<i>La Crosse, WI, USA</i>)	3013
The Alcohol Dehydrogenase Isoenzyme as a Potential Marker of Pancreatitis. W. JELSKI, J. PIECHOTA, K. ORYWAL, M. SZMITKOWSKI (<i>Bialystok, Poland</i>)	3019
Comparable Efficacy of Idelalisib Plus Rituximab and Ibrutinib in Relapsed/refractory Chronic Lymphocytic Leukemia: A Retrospective Case Matched Study of the Polish Adult Leukemia Group (PALG). B. PUŁA, B.K. BUDZISZEWSKA, J. RYBKA, L. GIL, E. SUBOCZ, M. DŁUGOSZ-DANECKA, D. ZAWIRSKA, A. WASZCZUK-GAJDA, E. ISKIERKA-JAŹDŹEWSKA, A. KOPACZ, A. SZYMCZYK, J. CZYŻ, E. LECHMARAŃDA, K. WARZOCHA, K. JAMROZIAK (<i>Warsaw; Wroclaw; Poznan; Krakow; Lodz; Rzeszow; Lublin; Bydgoszcz, Poland</i>)	3025
Calcium Phosphate Cement in the Surgical Management of Benign Bone Tumors. T. HIGUCHI, N. YAMAMOTO, K. HAYASHI, A. TAKEUCHI, H. KIMURA, S. MIWA, K. IGARASHI, K. ABE, Y. TANIGUCHI, H. AIBA, H. TSUCHIYA (<i>Kanazawa, Japan</i>)	3031
Nephrometry Scores: The Effect of Imaging on Routine Read-out and Prediction of Outcome of Nephron-sparing Surgery. J. WADLE, S. HETJENS, J. WINTER, J. MÜHLBAUER, M. NEUBERGER, F. WALDBILLIG, F. WESSELS, N. WESTHOFF, P. RIFFEL, N. WAGENER, P. HONECK, M.C. KRIEGMAIR (<i>Mannheim, Germany</i>)	3037
Comparing Image-guided targeted Biopsies to Radical Prostatectomy Specimens for Accurate Characterization of the Index Tumor in Prostate Cancer. F. PORPIGLIA, S. DE LUCA, E. CHECCUCCI, D. GARROU, M. MANFREDI, F. MELE, A. PECORARO, R. PASSERA, E. BOLLITO, C. FIORI (<i>Orbassano; Turin, Italy</i>)	3043
Bone Mineral Density as a Potential Predictive Factor for Luminaltype Breast Cancer in Postmenopausal Women. F. LUMACHI, S.M.M. BASSO, V. CAMOZZI, R. SPAZIANTE, P. UBIALI, M. ERMANI (<i>Padua; Pordenone, Italy</i>)	3049
Depression in Choroidal Melanoma Patients Treated with Proton Beam Radiotherapy. M.M. MOSCHOS, G.A. MOUSTAFA, A. LAVARIS, C. DAMASKOS, K. LAIOS, E. KARATHANOU, D.S. LADAS, I. ASPROUDIS, N. GARMPIIS, C. KALOGEROPOULOS (<i>Athens; Larissa; Ioannina, Greece</i>)	3055
Liver-dominant Breast Cancer Metastasis: A Comparative Outcomes Study of Chemoembolization Versus Radioembolization. J. CHANG, R. CHARALEL, C. NODA, R. RAMASWAMY, S.K. KIM, M. DARCY, G. FOLTZ, O. AKINWANDE (<i>St. Louis, MO; New York, NY, USA</i>)	3063
Chemotherapy Plus Bevacizumab as Neoadjuvant or Conversion Treatment in Patients with Colorectal Liver Metastases. P.G. ALFONSO, M.C. PODESTA, A.M. MARTÍN, M.B. CODESIDO, A. CALVO, I. PELIGROS, A. CORCUERA, A.B.R. BLANCO, S. CUSTODIO-CABELLO, D.L. TRABADA, M. MARTÍN, E. DE RAMÓN (<i>Madrid, Spain</i>)	3069

Preoperative Pulmonary Function Tests (PFTs) and Outcomes from Resected Early Stage Non-small Cell Lung Cancer (NSCLC). D. ALMQUIST, N. KHANAL, L. SMITH, A.K. GANTI (<i>Omaha, NE, USA</i>).....	2903
First French Pilot Quality Assessment of the EndoPredict Test for Early Luminal Breast Carcinoma. J. LEHMANN-CHE, C. MIQUEL, J. WONG, C. CALLENS, E. ROULEAU, V. QUILLIEN, N. LOZANO, A. CAYRE, L. LACROIX, I. BIECHE, P. BERTHEAU, L. TEIXEIRA, F.P. LLORCA, P.J. LAMY, P. DE CREMOUX (<i>Paris; Villejuif; Rennes; Montpellier; Clermont-Ferrand, France</i>)	2909
Micropapillary Structures in Colorectal Cancer: An Anoikis-resistant Subpopulation. M. PATANKAR, S. VÄYRYNEN, A. TUOMISTO, M. MÄKINEN, S. ESKELINEN, T.J. KARTTUNEN (<i>Oulu, Finland</i>)	2915
Utilization of Neoadjuvant Intensity-modulated Radiation Therapy for Rectal Cancer in the United States. T.R. CUSHMAN, S. VENIGALLA, E.D. BROOKS, C. LIN, V. VERMA (<i>Phoenix, AZ; Philadelphia, PA; Houston, TX; Omaha, NE, USA</i>)	2923
Eribulin Promotes Antitumor Immune Responses in Patients with Locally Advanced or Metastatic Breast Cancer. W. GOTO, S. KASHIWAGI, Y. ASANO, K. TAKADA, T. MORISAKI, H. FUJITA, T. TAKASHIMA, M. OHSAWA, K. HIRAKAWA, M. OHIRA (<i>Osaka, Japan</i>)	2929
Single-stranded DNA (ssDNA) Labeling Index Is Related to Risk Grade in Patients with Gastrointestinal Stromal Tumors. K. MOCHIZUKI, T. KONDO, N. OISHI, I. TAHARA, T. INOUE, K. KASAI, T. NAKAZAWA, R. KATOH (<i>Chuo, Japan</i>)	2939
Correlation Between Ktrans and Microvessel Density in Different Tumors: A Meta-analysis. H.J. MEYER, A. WIENKE, A. SUROV (<i>Leipzig; Halle, Germany</i>)	2945
Postoperative Hypofractionated Radiotherapy for Prostate Cancer. F. TRAMACERE, S. ARCANGELI, A. PIGNATELLI, S. BRACCI, M. VINELLA, M. PORTALURI (<i>Brindisi; Rome, Italy</i>)	2951
Takotsubo Cardiomyopathy Developed After Two-stage Surgery for Double Primary Lung Cancer. F. KINOSHITA, G. TOYOKAWA, T. TAGAWA, T. MATSUBARA, Y. KOZUMA, N. HARATAKE, S. TAKAMORI, T. AKAMINE, F. HIRAI, Y. MAEHARA (<i>Fukuoka, Japan</i>).....	2955
Candidate MicroRNA Biomarkers of Therapeutic Response to Sunitinib in Metastatic Renal Cell Carcinoma: A Validation Study in Patients with Extremely Good and Poor Response. J. KOVACOVA, J. JURACEK, A. POPRACH, T. BUCHLER, J. KOPECKY, O. FIALA, M. SVOBODA, O. SLABY (<i>Brno; Prague; Hradec Kralove; Pilsen, Czech Republic</i>).....	2961
Safety and Feasibility of Single-port Surgery for Colon Cancer in Octogenarians. M. TEI, M. OTSUKA, Y. SUZUKI, K. KISHI, M. TANEMURA, H. AKAMATSU (<i>Osaka, Japan</i>)	2967
Predicting the Risk of Developing New Cerebral Lesions After Stereotactic Radiosurgery or Fractionated Stereotactic Radiotherapy for Brain Metastases from Renal Cell Carcinoma. D. RADES, L. DZIGGEL, O. BLANCK, N. GEBAUER, T. BARTSCHT, S.E. SCHILD (<i>Lübeck; Güstrow, Germany; Scottsdale, AZ, USA</i>)	2973
Adherence to Guidelines During Follow-up of Endometrial Cancer: Analysis of French Health Insurance Database. J. PHELIPPEAU, R. ROUZIER, M. KOSKAS (<i>Paris; Montigny Le Bretonneux; Saint-Cloud, France</i>)	2977
Correlation Between Disease Stage and the Presence of Viable Circulating Tumor Cells in Endometrial Cancer. I. KISS, K. KOLOSTOVA, R. MATKOWSKI, M. JĘDRYKA, A. CZEKAŃSKI, J. PAVLASEK, V. BOBEK (<i>Prague; Wrocław; Liberec; Usti nad Labem, Czech Republic</i>)	2983
Second Opinion Reviews for Cancer Diagnoses in Anatomic Pathology: A Comprehensive Cancer Center's Experience. C. STROSBURG, J. GIBBS, D. BRASWELL, R.R. LESLIE, J. MESSINA, B.A. CENTENO, D. COPPOLA (<i>Tampa, FL, USA</i>).....	2989

Identification of Functional Thyroid Stimulating Hormone Receptor and <i>TSHR</i> Gene Mutations in Hepatocellular Carcinoma. Y.-L. SHIH, Y.-H. HUANG, K.-H. LIN, Y.-D. CHU, C.-T. YEH (<i>Taoyuan, Taiwan, ROC</i>)	2793
Pharmacokinetics, Biodistribution, and Toxicity Evaluation of Anti-SEMA3A (F11) in <i>In Vivo</i> Models. J. LEE, D. KIM, E. SON, S.-J. YOO, J.K. SA, Y.J. SHIN, Y. YOON, D.-H. NAM (<i>Seoul, Republic of Korea</i>)	2803
Bidirectional Regulation of COX-2 Expression Between Cancer Cells and Macrophages. M.I. CARVALHO, R. BIANCHINI, J. FAZEKAS-SINGER, I. HERRMANN, I. FLICKINGER, J.G. THALHAMMER, I. PIRES, E. JENSEN-JAROLIM, F.L. QUEIROGA (<i>Vila Real; Porto, Portugal; Vienna, Austria</i>)	2811
Hypermethylation of <i>BRCA1</i> Gene in Meningioma in Elderly Males. I.A.S. LOMBARDI, M.H.G. FARIA, S.H.B. RABENHORST, M.A. ZANINI, M.I.D.M.C. PARDINI, R.M.T. GROTTTO, A.C. FERRASI (<i>Botucatu; Campinas; Fortaleza, Brazil</i>)	2819
Preparation and <i>In Vitro</i> and <i>In Vivo</i> Characterization of the Tumor-specific Antigen-derived Peptide as a Potential Candidate for Targeting Human Epidermal Growth Factor Receptor 2-positive Breast Carcinomas. S.M. OKARVI, I. ALJAMMAZ (<i>Riyadh, Saudi Arabia</i>).....	2823
3D Culture Represents Apoptosis Induced by Trastuzumab Better than 2D Monolayer Culture. T. TATARA, T. MUKOHARA, R. TANAKA, Y. SHIMONO, Y. FUNAKOSHI, Y. IMAMURA, M. TOYODA, N. KIYOTA, M. HIRAI, Y. KAKEJI, H. MINAMI (<i>Kobe; Kashiwa, Japan</i>)	2831
Analysis of <i>MSH2</i> Loss of Heterozygosity, Expression, and IVS10+12G>A Polymorphism in Sporadic Colon Cancer. T. CACEV, E. ZAPLETAL, V. MUSANI, I. RAKO, B. LONCAR, G. ARALICA, S. KAPITANOVIC (<i>Zagreb, Croatia</i>).....	2841
2-Phenyl-naphthylidin-4-one Derivative LYF-11 Inhibits Interleukin-6-mediated Epithelial-to-Mesenchymal Transition via the Inhibition of JAK2/STAT3 Signaling Pathway in MCF-7 Cells. L.-C. LIU, Y.-C. WU, S.-C. KUO, C.-T. HO, T.-D. WAY, S.-T. CHEN (<i>Taichung; Changhua, Taiwan, ROC; New Brunswick, NJ, USA</i>)	2849
Fatty Acids of CLA-enriched Egg Yolks Can Induce Mitochondrial Pathway of Apoptosis in MCF-7 Breast Cancer Cells. A.A. KORONOWICZ, M. DROZDOWSKA, P. BANKS, E. PIASNA-SŁUPECKA, D. DOMAGAŁA, T. LESZCZYŃSKA (<i>Krakow, Poland</i>)	2861
<i>Clinical Studies</i>	
Human Polyomaviruses Are Not Frequently Present in Cancer of the Salivary Glands. T. RAMQVIST, R.G. URSU, L. HAEGGBLOM, L. MIRZAIE, C. GAHM, L. HAMMARSTEDT-NORDENVALL, T. DALIANIS, A. NÄSMAN (<i>Stockholm, Sweden; Iasi, Romania</i>).....	2871
Chemotherapy or Combined Modality Therapy for Early-stage Hodgkin Lymphoma. J.A. TOROK, Y. WU, J. CHINO, L.R. PROSNITZ, A.W. BEAVEN, G.J. KIM, C.R. KELSEY (<i>Durham; Chapel Hill, NC, USA</i>)	2875
Low-dose LNG-IUS as Therapy for Endometrial Hyperplasia. A Prospective Cohort Pilot Study. E. THORESEN SLETTEN, M. ARNES, A.B. VEREIDE, A. ØRBO (<i>Tromsø, Norway</i>).....	2883
Double <i>KRAS</i> and <i>BRAF</i> Mutations in Surgically Treated Colorectal Cancer Liver Metastases: An International, Multi-institutional Case Series. A. DESHWAR, G.A. MARGONIS, N. ANDREATOS, C. BARBON, J. WANG, S. BUETTNER, D. WAGNER, K. SASAKI, A. BEER, I.M. LØES, E. PIKOULIS, C. DAMASKOS, N. GARMPIIS, K. KAMPHUES, J. HE, K. KACZIREK, G. POULTSIDES, P.E. LØNNING, H.J. MISCHINGER, F.N. AUCEJO, M.E. KREIS, C.L. WOLFGANG, M.J. WEISS (<i>Baltimore, MD; Cleveland, OH; Stanford, CA, USA; Graz; Vienna, Austria; Bergen, Norway; Athens, Greece; Berlin, Germany</i>).....	2891
Disparities of Immunotherapy Utilization in Patients with Stage III Cutaneous Melanoma: A National Perspective. Z. AL-QURAYSHI, J.E. CROWTHER, J.B. HAMNER, C. DUCOIN, M.T. KILLACKEY, E. KANDIL (<i>New Orleans, LA, USA</i>)	2897

Chemerin in a Mouse Model of Non-alcoholic Steatohepatitis and Hepatocarcinogenesis. E.M. HABERL, R. POHL, L. REIN-FISCHBOECK, S. FEDER, C.J. SINAL, C. BUECHLER (<i>Regensburg, Germany; Halifax, Canada</i>)	2649
The Expression of Riboflavin Transporters in Human Colorectal Cancer. V. TUTINO, M.L. DEFRANCESCO, M. TOLOMEO, V. DE NUNZIO, D. LORUSSO, D. PALENI, M.G. CARUSO, M. NOTARNICOLA, M. BARILE (<i>Bari, Italy; Mathay, France</i>)	2659
Tumor Cell-selective Synergism of TRAIL- and ATRA-induced Cytotoxicity in Breast Cancer Cells. A. REINHARDT, H. LIU, Y. MA, Y. ZHOU, C. ZANG, J.-P. HABEL, K. POSSINGER, J. EUCKER (<i>Heidelberg; Berlin, Germany; Taiyuan, PR China</i>).....	2669
Application of Albumin-embedded Magnetic Nanoheaters for Release of Etoposide in Integrated Chemotherapy and Hyperthermia of U87-MG Glioma Cells. M. BABINCOVÁ, H. VRBOVSKÁ, P. SOURIVONG, P. BABINEC, Š. DURDÍK (<i>Bratislava, Slovakia; Tulsa, OK, USA</i>)	2683
Potent Antitumour Effects of Novel Pentabromobenzylisothioureas Studied on Human Glial-derived Tumour Cell Lines. E. PUCKO, E. MATYJA, M. KORONKIEWICZ, R.P. OSTROWSKI, Z. KAZIMIERCZUK (<i>Warsaw, Poland</i>)	2691
Radiation Gene-expression Signatures in Primary Breast Cancer Cells. L. MINAFRA, V. BRAVATÀ, F.P. CAMMARATA, G. RUSSO, M.C. GILARDI, G.I. FORTE (<i>Cefalù; Milan, Italy</i>)	2707
Podoplanin Expression as a Prognostic Factor in Gastric Cancer. S. MARUYAMA, S. FURUYA, K. SHIRAIISHI, H. SHIMIZU, H. AKAIKE, N. HOSOMURA, Y. KAWAGUCHI, H. AMEMIYA, H. KAWAIDA, M. SUDO, S. INOUE, H. KONO, D. ICHIKAWA (<i>Chuo; Kyoto, Japan</i>)	2717
Tyrosine Kinase Inhibition in HPV-related Squamous Cell Carcinoma Reveals Beneficial Expression of cKIT and Src. B. KRAMER, M. KNEISSLE, R. BIRK, N. ROTTER, C. ADERHOLD (<i>Manheim; Marburg, Germany</i>).....	2723
Impact of the Lok-bar for High-precision Radiotherapy with Tomotherapy. M. HIRATA, H. MONZEN, M. TAMURA, K. KUBO, K. MATSUMOTO, K. HANAOKA, M. OKUMURA, Y. NISHIMURA (<i>Osaka, Japan</i>)	2733
Combined Gemcitabine and Metronidazole Is a Promising Therapeutic Strategy for Cancer Stem-like Cholangiocarcinoma. M. KAWAMOTO, M. UMEBAYASHI, H. TANAKA, N. KOYA, S. NAKAGAWA, K. KAWABE, H. ONISHI, M. NAKAMURA, T. MORISAKI (<i>Fukuoka, Japan</i>).....	2739
The Immune Checkpoint Molecule CD200 Is Associated with Tumor Grading and Metastasis in Bladder Cancer. P. REXIN, A. TAUCHERT, J. HÄNZE, H. HEERS, A. SCHMIDT, R. HOFMANN, A. HEGELE (<i>Marburg, Germany</i>)	2749
Moesin Involvement in Oral Carcinogenesis of the Lower Lip. A. ASSAO, P.M. YOSHINO, M.C.M. MEDEIROS, A.L. CARVALHO, F.A. SOARES, L.P. KOWALSKI, D.T. OLIVEIRA (<i>Sao Paulo, Brazil</i>).....	2755
Demethoxycurcumin Suppresses Migration and Invasion of Human Cervical Cancer HeLa Cells via Inhibition of NF-κB Pathways. C.-C. LIN, C.-L. KUO, Y.-P. HUANG, C.-Y. CHEN, M.-J. HSU, Y.L. CHU, F.-S. CHUEH, J.-G. CHUNG (<i>Taichung; Pingtung, Taiwan, ROC</i>)	2761
The Combination of Flavokawain B and Daunorubicin Induces Apoptosis in Human Myeloid Leukemic Cells by Modifying NF-κB. J.J. LEE, K.-N. KOH, C.-J. PARK, S. JANG, H.J. IM, N. KIM (<i>Seoul, Republic of Korea</i>)	2771
Clinicopathological Characteristics and KRAS Mutation Status of Endometrial Mucinous Metaplasia and Carcinoma. J.-Y. SUNG, Y.Y. JUNG, H.-S. KIM (<i>Seoul; Goyang, Republic of Korea</i>)	2779
Expression of Zinc Finger and BTB Domain-containing 7A in Colorectal Carcinoma. J.W. JOO, H.-S. KIM, S.-I. DO, J.-Y. SUNG (<i>Seoul, Republic of Korea</i>)	2787