

Errata

Volume 36, No. 3, page 952: Figure 1 should be replaced with:

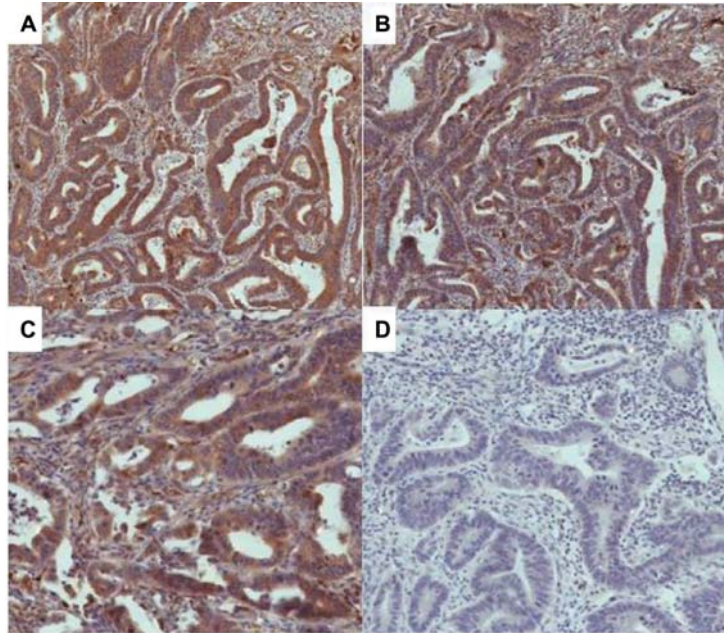


Figure 1. Antibody to γ -synuclein (SNCG) specifically reacts with SNCG protein expressed in tumor tissues but not with SNCA and SNCB. A: Anti-SNCG incubated with phosphate buffer saline; B, C: anti-SNCG incubated with GST-SNCA (B) and GST-SNCB (C) had no impact on its reaction with SNCG protein in tumor tissue; D, anti-SNCG incubated with GST-SNCG did not react with the SNCG in tumor tissue (original magnification $\times 200$). (These pictures are from a colorectal cancer patient.)

Volume 36, No. 3, page 952: left column, line 27 should read:

tumor biopsy that come from the same block (SNCG) protein

Volume 36, No. 3, page 953: left column, line 2 should read:

of SNCG expressed in tumor tissues. To test whether the

Volume 36, No. 3, page 953: right column, lines 1-5 should read:

of the SNCG expressed in tumor tissue, we first made it react with excessive purification combined protein GST-SNCA, GST-SNCB and GST-SNCG, then incubated it with tumor tissue biopsy. The results showed that anti-SNCG no longer reacted with the SNCG in tumor tissue after it reacted with

Volume 36, No. 3, page 954: left column, line 4 should read:

protein in the tumor tissue (Figure 1), which indicates that

Volume 36, No. 3, page 955: The 3rd line of the Discussion should read:

tumor tissue, in order to ensure the accuracy of our research. The

