

**Errata**

Volume 31, No. 1, page 327 and 328: Tables II, III and IV should be replaced with:

Table II. Relationship of *STC1* gene expression level to clinicopathological features.

Variable	<i>STC1</i> expression		<i>p</i> -Value
	Low (n=101)	High (n=101)	
Age (years)	66.3±11.1	65.1±10.5	0.432
Gender			
Male	52	59	0.480
Female	49	43	
Tumor size			
≤5 cm	69	62	0.377
>5 cm	32	39	
Histological type			
Well+mod	91	83	0.153
Poor+muc	10	18	
Depth of invasion			
T1, T2	25	25	1.000
T3, T4	76	76	
Lymph node metastasis			
Absent	54	49	0.574
Present	47	52	
Location			
Colon	59	51	0.323
Rectum	42	50	
Lymphatic invasion			
Absent	69	63	0.460
Present	32	38	
Venous invasion			
Absent	44	31	0.080
Present	57	70	
Liver metastasis			
Absent	87	75	0.051
Present	24	26	

n: Number of patients, well: well-differentiated, mod: moderately differentiated, poor: poorly differentiated, muc: mucinous.

Table III. Univariate analysis of clinicopathological factors for overall survival.

Variable	n	Hazard ratio	95% CI	<i>p</i> -Value
Age (years)				
≤65	91	1		
>65	111	1.389	0.765-2.525	0.281
Gender				
Male	110	1		
Female	92	0.815	0.451-1.475	0.500
Tumor size				
≤5 cm	131	1		
>5 cm	71	2.379	1.324-4.275	0.004
Histological type				
Well, mod	174	1		
Poor, muc	28	2.410	1.220-4.761	0.011
Depth of invasion				
T1, T2	50	1		
T3, T4	152	16.802	2.314-121.974	0.005
Location				
Colon	110	1		
Rectum	92	1.526	0.847-2.747	0.159
Lymph node metastasis				
Absent	103	1		
Present	99	6.015	2.797-12.993	<0.001
Lymphatic invasion				
Absent	132	1		
Present	70	3.587	1.971-6.526	<0.001
Venous invasion				
Absent	75	1		
Present	127	1.550	0.797-3.015	0.196
Liver metastasis				
Absent	162	1		
Present	40	8.275	4.543-15.074	<0.001
<i>STC1</i>				
Low	101	1		
High	101	2.091	1.135-3.854	0.018

n: Number of patients, CI: confidence interval, well: well-differentiated, mod: moderately differentiated, poor: poorly differentiated, muc: mucinous.

Table IV. Multivariate analysis of clinicopathological factors for overall survival.

Variable	Hazard ratio	95% CI	<i>p</i> -Value
Tumor size (>5 cm/≤5 cm)	1.165	0.627-2.164	0.628
Histological type (well, mod/poor, muc)	1.413	0.679-2.940	0.356
Depth of invasion (T3, T4/T1, T2)	6.092	0.806-46.073	0.080
Lymph node metastasis (present/absent)	4.397	2.025-9.546	<0.001
Lymphatic invasion (present/absent)	1.551	0.769-3.125	0.220
Liver metastasis (present/absent)	5.127	2.764-9.511	<0.001
<i>STC1</i> (high/low)	1.959	1.055-3.638	0.033

CI: Confidence interval, well: well-differentiated, mod: moderately differentiated, poor: poorly differentiated, muc: mucinous.

Volume 32, No. 2, page 519: The title, authors' names and affiliations should read:

## Cytotoxicity of Hydrophilic Silver Carboxylato Complexes

ELEANOR FOURIE<sup>1</sup>, ELIZABETH ERASMUS<sup>1</sup>, JANNIE C. SWARTS<sup>1</sup>,  
 ANDRÉ TUCHSCHERER<sup>2</sup>, ALEXANDER JAKOB<sup>2</sup>, HEINRICH LANG<sup>2</sup>,  
 GISELA K. JOONE<sup>3</sup> and CONSTANCE E.J. VAN RENSBURG<sup>3</sup>

<sup>1</sup>*Department of Chemistry, University of the Free State, Bloemfontein, Republic of South Africa;*

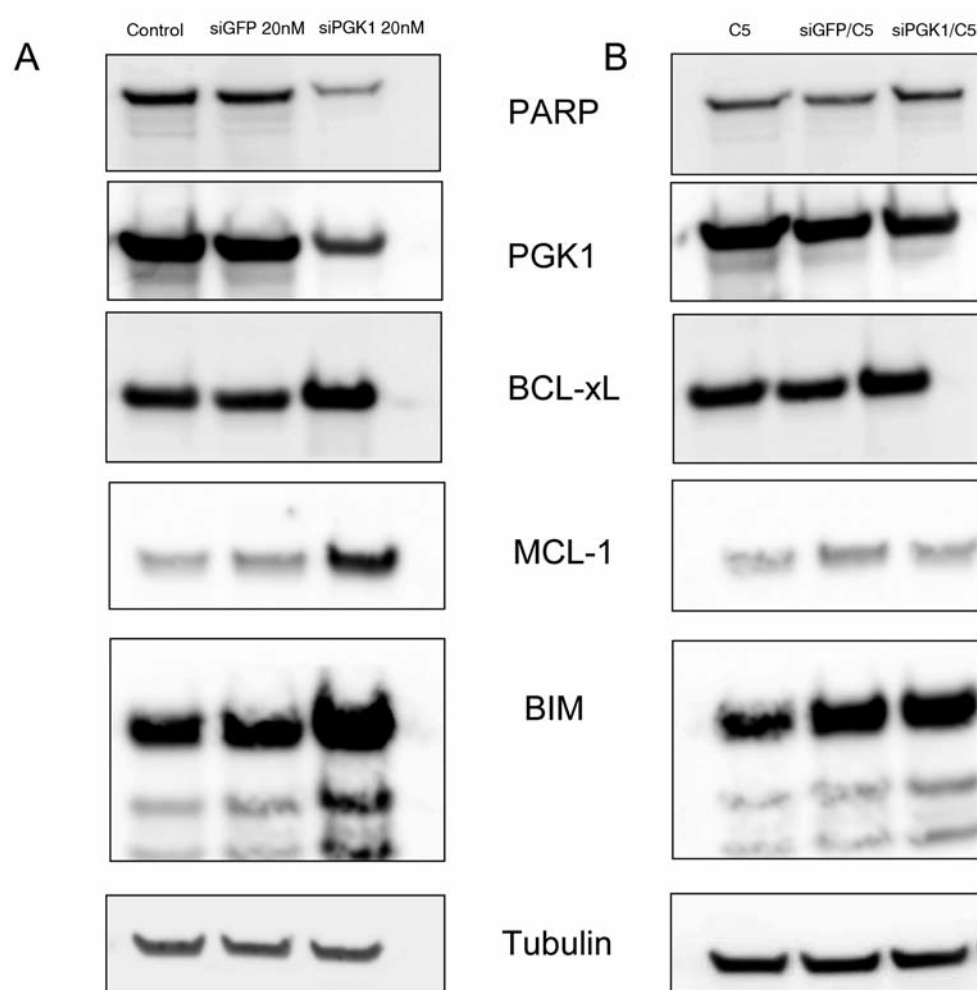
<sup>2</sup>*Technische Universität Chemnitz, Fakultät für Naturwissenschaften,  
 Institut für Chemie, Lehrstuhl für Anorganische Chemie, Chemnitz, Germany;*

<sup>3</sup>*Department of Immunology, Institute for Pathology,  
 University of Pretoria, Pretoria, Republic of South Africa*

Volume 32, No. 9, page 4025: The last two lines of the abstract should read:

*and with conservative (palliative) management alone for  
 advanced MPM.*

Volume 32, No. 10, page 4285: Figure 8 should be replaced with:



Volume 32, No. 9, page 3684: The first three lines of Materials and Methods should read:

*Cell culture.* The SACC83 and ACCh cell lines were derived from two sublingual gland tumors. Although the cell lines were established from biopsies of diseased salivary glands, upon careful examination they could not be verified as Adenoid Cystic Carcinoma. The ACC cell lines were established at the Department of Oral Maxillofacial Surgery, Hiroshima University.

Volume 32, No. 10, page 4401: Figure 5 should be replaced with:

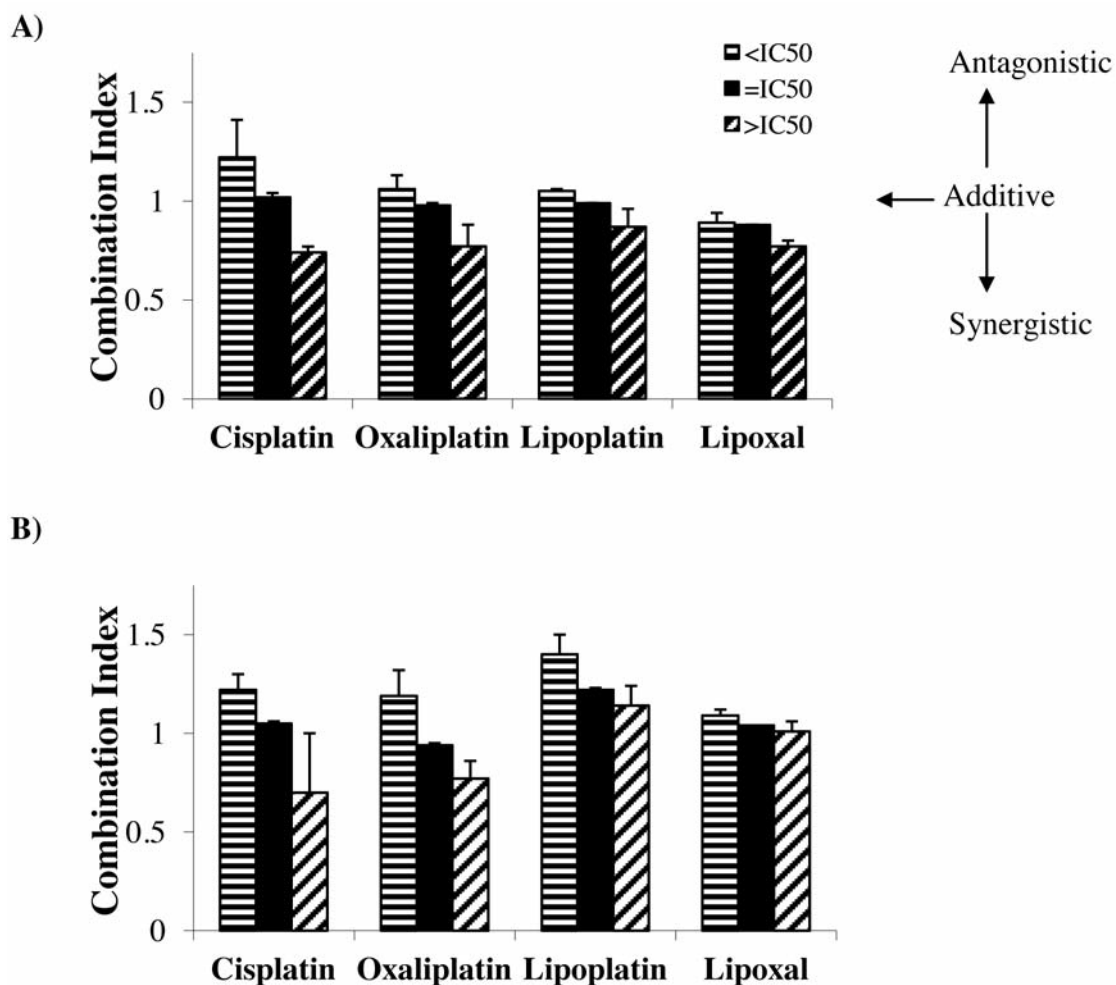


Figure 5. The combination index (CI) of chemo-radiotherapy on HCT116 cells at 8 and 48 h of incubation time. Column (□), (■) and (▨) indicate CI values at the concentration of platinum drugs lower, higher and equal to the  $IC_{50}$  values.

Volume 32, No. 10, page 4412: The following sentence should be added at the end of the Acknowledgements:

MEXT-Supported Program for Strategic Research Foundation at Private Universities (2012-2015), commissioned by the Ministry of Education, Culture, Sports, Science and Technology for Mitsuru Sasako.

## **Retraction**

The article entitled: “Aberrant methylation to heparan sulfate glucosamine 3-O-sulfotransferase 2 genes as a biomarker in colorectal cancer” by Tokuyama Y, Takahashi T, Okumura N, Nonaka K, Kawaguchi Y, Yamaguchi K, Osada S, Gazdar A and Yoshida K, published in *Anticancer Research*, 2010, *30(12)*: pp. 4811-4818 is retracted.

This action, requested by the authors, is based on the findings and recommendations of an Internal Review Committee at the University of Texas Southwestern, Dallas, TX, USA, as the GAPDH loading control in Figure 1A of the article (p.4813) appears to be a modified version of a figure previously published elsewhere.