

## (-)-Gossypol Containing Hen Sera and a Myosin (-)-Gossypol Conjugate Reduces the Proliferation of MCF-7 Cells

J.M. REDDISH<sup>1</sup>, W. YE<sup>2</sup>, Y.C. LIN<sup>2,3</sup> and M. WICK<sup>1</sup>

<sup>1</sup>Department of Animal Science,

<sup>2</sup>Laboratory of Reproductive and Molecular Endocrinology, College of Veterinary Medicine,

and <sup>3</sup>The Ohio State University Comprehensive Cancer Center,

The Ohio State University, Columbus, OH 43210, U.S.A.

**Abstract.** Sera from chickens that consumed a known level of (-)-gossypol (-)-GP exhibited bioactivity against human breast cancer cells *in vitro*. Based on this, it is conceivable that similar anti-breast cancer activities of different magnitudes will be exhibited in biological samples harvested from (-)-GP-fed layer hens. The experimental data generated in this study may influence the fundamental thinking regarding the utilization of low cost agricultural commodities such as (-)-GP cottonseed meal to produce value-added chemopreventive animal products.

Gossypol (GP) is a naturally occurring polyphenolic pigment present in the cotton plant. Naturally occurring GP exists as a mixture of two enantiomers, (+)-GP and (-)-GP and is also found in cotton plant by-products (1) that are often consumed by humans and food-producing animals. On average, conventional cottonseeds contain 65% (+)-GP and 35% (-)-GP. However, selective breeding strategies have resulted in novel cottonseed cultivars containing 65% (-)-GP and 35% (+)-GP. In the U.S. cottonseed oil (CSO) and cottonseed meal (CSM) directly enter the human diet through their use in cooking, frying, and food processing. Previous studies demonstrated the incorporation of conjugated linoleic acid and fish oil into both adipose tissue and muscle lipid (2) as well as incorporation into the eggs (3, 4) of hens fed supplemented diets supplemented with varying levels of conjugated linoleic acid and fish oil. These authors concluded that CLA-enriched chicken poultry feeds could be an alternative vehicle for delivering health-promoting fatty acids to consumers (2, 3).

*Correspondence to:* M. Wick, Department of Animal Science, The Ohio State University, Columbus, OH 43210, U.S.A. e-mail: wick.13@osu.edu

*Key Words:* (-)-Gossypol, breast cancer, MCF-7 cells, gossypol-myosin, anticancer.

CSM is has been used as a high quality protein supplement in the feeds for meat-producing farm animals, including fish. However, high levels of ( $\pm$ )-GP contained in human diets and animal feeds are considered undesirable. In 1974, the FDA limited the free ( $\pm$ )-GP content in cottonseed products to be no more than 450 ppm (0.045%) (5). Because of this legal stipulation, the cotton industry and the USDA spend millions of dollars annually to remove ( $\pm$ )-GP from cottonseed products to meet FDA limits.

*Anticancer activity of GP.* A significant body of evidence has shown antiproliferative effects of ( $\pm$ )-GP against a variety of human cancer cell lines including those of the breast, ovary, cervix, uterus, adrenals, pancreas and colon (6-16). Our own data demonstrated the antiproliferative effects of ( $\pm$ )-GP on MCF-7, MCF-7Adr and MDA-MB-231 human breast cancer cell (HBCC) lines (17, 18). We have also shown that ( $\pm$ )-GP arrests the *in vitro* growth of the human prostate cancer cell line, PC-3 (19). We also reported that ( $\pm$ )-GP reduced primary tumor growth and the incidence of metastasis in Copenhagen rats bearing Dunning prostatic cancer cells (MAT-LyLu) (20).

Previous reports demonstrated that ( $\pm$ )-GP suppresses MCF-7 cell growth by modulating the expression of the cell cycle regulatory proteins, Rb and cyclin D1 (21). The anti-proliferative activity of naturally occurring racemic ( $\pm$ )-GP, has been attributed to its (-)-enantiomer, (-)-GP, which is a more potent inhibitor of cancer cell growth (22, 23). Previous authors (24) demonstrated that (-)-GP was more effective at inhibiting adipose stromal cells and human breast cancer cells.

The overall goal of our study was to employ an *in vitro* human breast cell culture model to investigate the ability of (-)-GP in sera and (-)-GP bound to muscle protein to affect the proliferation of the human breast cancer cell line MCF-7. In this study, we take the first step to investigate tailor-made, functional food components possessing anticancer and chemopreventive effects in meat or eggs produced by (-)-GPCSO-fed chickens.

Table I. Basal diet for commercial layers.

Ingredient	Inclusion (%)
Corn	57.24
Soybean meal	10.90
Wheat midds	5.00
Cottonseed meal	11.50
Limestone	9.00
Dicalcium phosphate	1.20
L-lysine	0.06
DL-methionine	0.20
Corn oil	4.00
Salt	0.40

## Materials and Methods

Three levels of the (-) GP were added by replacing corn oil with (-)GP enriched cottonseed oil to a basal diet at 8 ppm, 16 ppm and 32 ppm in for the experimental diets. The basal diet (Table I) contained no added CSO and was used as a control. Each diet was fed to a group of 5 commercial hens housed in individual cages at a rate 1.25 lb per group per day. Feed was weighed weekly and recorded to determine feed intake. Body weights and feed consumption were evaluated weekly, and egg production was evaluated at the end of the 28-day production period. Serum samples were collected weekly and liver toxicity was evaluated using LDH assays on serum collected over the 28-day production period.

**Measurement of liver toxicity by LDH assay.** Hepatic LDH released into the chicken serum was measured as an indicator of (-)GP toxicity to the chickens fed different levels of experimentally formulated GP-diets. A total of 12 serum samples (n=3 per treatment; 300 µl per sample) from chickens consuming different levels of GP for up to 28 days were randomly selected for LDH analysis by the Veterinary Clinical Pathology and Diagnostic Laboratory at The Ohio State University Veterinary Medical Teaching Hospital.

**Effect of hen sera on proliferation of MCF-7 cells.** Sera from the hens fed 32 ppm GPCSO was dialyzed against 0.2% BSA DMEM/F12 before adding to MCF-7 cells.  $3 \times 10^3$  MCF-7 cells were seeded in a 96-well plate, in 100 µl of DMEM/F12 supplemented with 5% FBS and incubated for 18 h. Culture medium was replaced with 0.2% BSA DMEM/F12 and incubated an additional 18 h. Culture media containing either 0% as a control, 2.5% or 12.5% treated chicken sera were incubated with MCF-7 cells for 24 h. Cell proliferation rates were quantified by using CellTiter 96 AQueous™ assay according to the manufacturer's protocol (Promega, Madison, WI, USA).

**Gossypol binding experiment.** Column-purified chicken myosin was prepared as previously described previously (25). Purified chicken myosin (0.5 mg) and 5.18 µg of (-)GP in 5.5 ml of PBS buffer were incubated at room temperature for 20 h. A sample of the solution was taken for subsequent SDS-PAGE and Western blot analysis. The remaining solution was dialyzed (1,000 MW cut-off) against 2x4 l of PBS at 4°C.

Table II. Measurement of lactate dehydrogenase (LDH) from serum samples to determine gossypol toxicity in chickens fed diets containing (-)-gossypol. No significant differences were found between treatments.

Days on GP-containing diet	Concentration of hepatic LDH (IU/ml)			
	0 ppm	8 ppm	16 ppm	32 ppm
0			1.054	
7	0.56	0.437	0.88	0.684
15	0.943	0.725	0.838	0.907
28	0.267	0.185	0.230	0.264

**SDS PAGE.** Electrophoretic analysis of the myosin-GP conjugate was performed by SDS PAGE as previously described (26). Briefly, The (-)GP/myosin solution was mixed with an equal volume of reducing buffer sample buffer (8 M urea/2 M thiourea, 75 mM DTT, 50 mM Tris, 3% SDS, and 0.004% bromophenol blue, pH 6.8) at a ratio of 1 mg of sample per 30 µl of sample buffer and incubated on ice for 30 min. Samples were centrifuged at  $10,000 \times g$  for 10 min prior to loading onto a 1 mm 12 cm x 14 cm polyacrylamide slab gel consisting of a 10% resolving gel [30:0.8, acrylamide/(N,N'-methylenebisacrylamide)] and a 3% stacking gel containing 1% SDS. Electrophoretic separation was carried out at a constant voltage of 10 V cm<sup>-1</sup>. Gels were stained with Coomassie Brilliant Blue G-250 and destained with 10% acetic acid.

**Western immunoblot analysis of (-)GP bound myosin.** After SDS-PAGE, the proteins were electro-transferred to a nitrocellulose membrane using a GENIE electroblot transfer apparatus (Idea Scientific, Minneapolis, MN 55414) in electro-transfer buffer (40 mM TRIS, 240 mM glycine, methanol, 0.1% SDS) (Towbin *et al.* 1979). After transfer, the membrane was blocked with PBST (136 mM NaCl, 2 mM KCl, 6 mM Na<sub>2</sub>HPO<sub>4</sub>, 2 mM KH<sub>2</sub>PO<sub>4</sub>, pH to 7.2, 3% Tween-20) for 30 min at 37°C. The pan sarcomeric myosin heavy chain monoclonal antibody, NA4, (27) was diluted at 1:10,000 in PBS-T and incubated on the membrane for 15 min at room temperature with gentle shaking. The membrane was washed 3 times PBS-T. Bound antibody was detected with horseradish peroxidase-conjugated goat anti-mouse IgG (H+ L) (Pierce-Endogen, Rockford, IL, USA) at a dilution of 1:2,500 in PBS-3% Tween-20 and incubated for 30 min at room temperature. The membrane was developed in StableDab solution (KPL, Inc. City State) according to manufacturer's recommendations. Color development was stopped by rinsing the membrane in ddH<sub>2</sub>O. The membrane was dried and the image was captured on a flatbed scanner.

**Analysis of gossypol bound myosin in cell culture.** For the cell culture experiment, the (-)GP/myosin solution was dialyzed against 0.2% BSA DMEM/F12 before adding to cells.  $3 \times 10^3$  MCF-7 cells were seeded in a 96-well plate, in 100 µl of DMEM/F12 supplemented with 5% FBS and incubated for 18 h. Culture medium was replaced with 0.2% BSA DMEM/F12 and incubated an additional 18 h. The cells were then incubated with 0, 2, 4 µM of chicken myosin bound(-)GP, pure (-)GP, (±)GP or (+)GP for 24 h at 37°C. Cell proliferation rates were quantified by using CellTiter 96 AQueous™ assay according to the manufacturer's protocol (Promega).

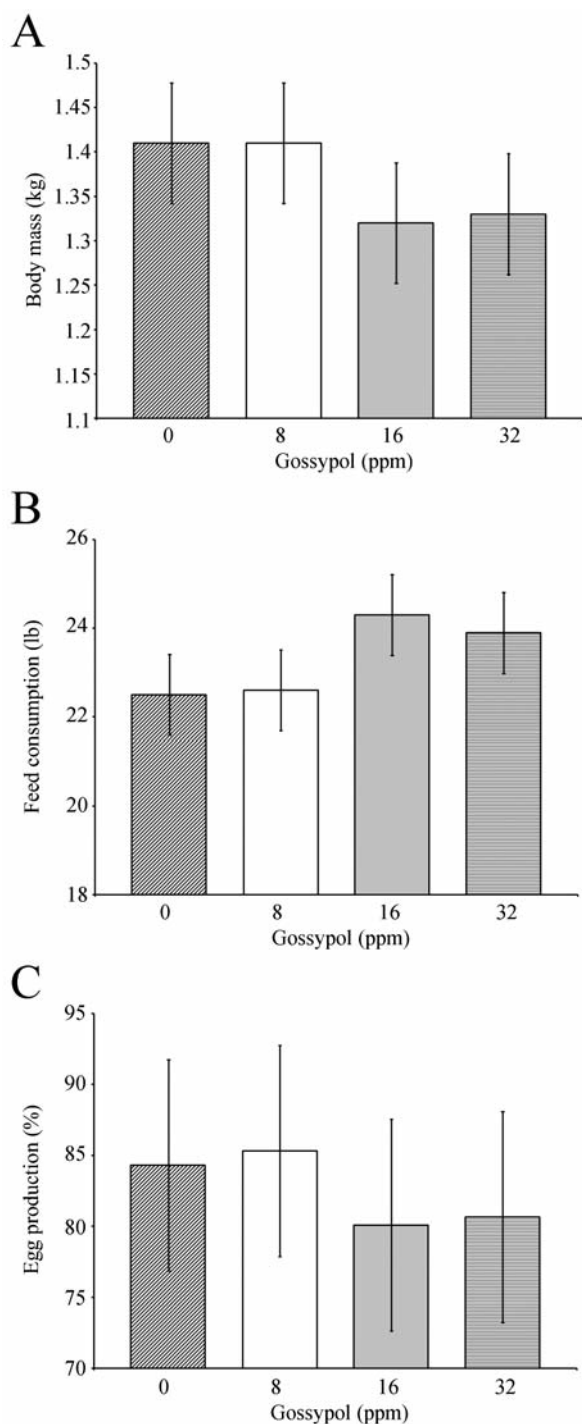


Figure 1. Production measurements of body mass (A), feed consumption (B) and percent egg production (C) of hens fed (-)-gossypol containing diets.

**Statistical analysis.** Production data were analyzed using PROC MIXED in SAS v9.1.3 (SAS Institute; Cary, NC, USA). Data are reported as least square means±SE for each line. The experimental designs for the *in vitro* assays were based upon the advice from and consultation with the OSU Biostatistics Program and functional

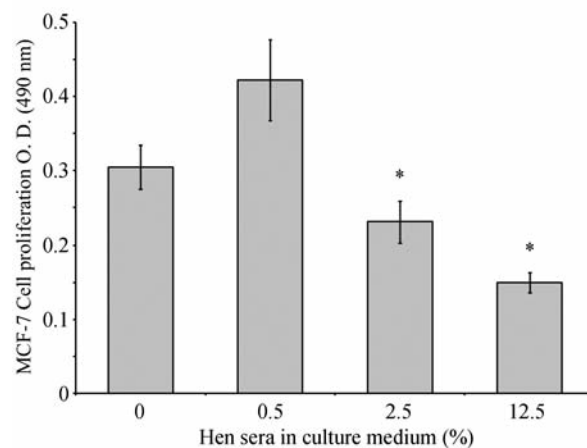


Figure 2. Effects of bioactive sera-GP harvested from laying hens fed (-)-GPCSM containing 32 ppm of GP for 28 days on the proliferation of MCF-7 cells.

analysis of experimental data from cell proliferation assays were quantified and analyzed by one-way ANOVA with post-test analysis using the Bonferroni *t*-test.

## Results

**Effect of (-)-GP diets on production of commercial layers.** No differences were shown between the control diets and the 8, 16 and 32 ppm (-)-GP added diets for any of the production parameters measured. There were no differences in average egg production, body weight or feed consumption in the control and (-)-GPCSM diets fed to layers (Figure 1A, 1B, and 1C, respectively).

**Liver toxicity by LDH assay.** The LDH data are summarized in Table I. The serum LDH for control chickens was 1.054 IU/ml. The serum LDH range from chickens consuming 8, 16, and 32 ppm of GP in (-)-GPCSM containing experimental diets for 7, 15, and 28 days were 0.185 to 0.943 IU/ml.

**Effect of hen sera on proliferation of MCF-7 cells.** Hens fed 32 ppm (-)-GPCSO for 28 d showed a dose-dependent decrease in the proliferation of MCF-7 cells (Figure 2). Data presented in Figure 2 demonstrate that culture medium containing 2.5% and 12.5% sera significantly ( $p=0.05$ ,  $p=0.014$ ) suppressed the proliferation of the ER $\alpha$ -positive human breast cancer cell line MCF-7 after 24 h of exposure.

**(-)-GP bound to the meat protein, myosin.** Data presented in Figure 3 showed a lowered electrophoretic mobility of purified myosin that was incubated with (-)-GP. Purified myosin in lane 2 migrated at its molecular mass corresponding to 223 kDa. However, after purified myosin was incubated with purified (-)-gossypol, its migration was

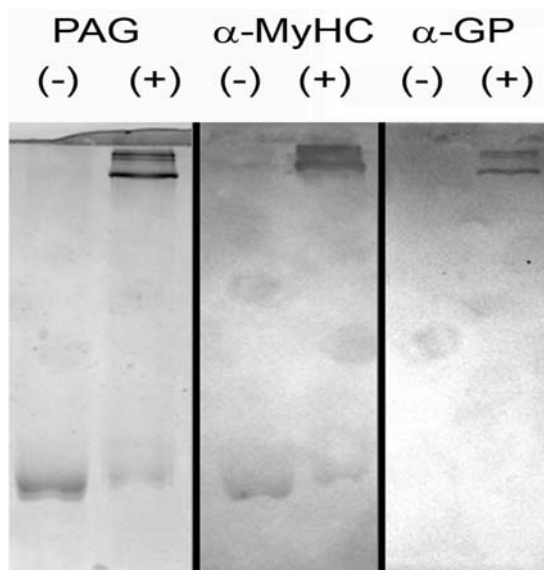


Figure 3. SDS-PAGE and Western blot of chicken fast skeletal muscle myosin heavy chains bound to (-)-GP.

inhibited (Figure 3 lane 3). In addition, Western blot presented in Figure 6 demonstrates that the myosin heavy chains were positively stained for the presence of GP.

As shown in Figure 4, treatment with (-)-GP, and (±)-GP, at 2 and 4 μM significantly suppressed the proliferation of MCF-7 cells [(-)-GP at 2 μM,  $p=0.02$ ; 4 μM,  $p=0.0001$ ; (±)-GP, 2 μM,  $p=0.001$ ; 4 μM  $p=0.0002$ ]. However, the same concentrations of (+)-GP did not exhibit any anti-breast cancer activity in MCF-7 cells. The chicken myosin-bound (-)-GP did not have an inhibitory effect at 2 μM. However, at 4 μM there was anti-proliferative activity.

### Discussion

The production data and the measure of hepatic toxicity in laying hens showed no negative effects of gossypol being added to the diets at 8, 16 or 32 ppm. These data demonstrate that short-term consumption of low levels of (-)-GP in the experimental diets formulated from the (-)-GP enriched cottonseed oil did not result in production decreases or hepatic toxicity. These results are similar to those reported by Lordelo *et al.* who demonstrated that commercial layers and broiler breeder hens fed 200 ppm (-)-GP and 200 ppm (+)-GP for 20 days did not exhibit any negative effects on egg production, food intake weight gain, yolk discoloration, or liver toxicity (30).

The FDA limit of free (±)-GP content in cottonseed products is 450 ppm (0.045%) (FDA, 1974) equivalent to 868.7 μM. The amount of GP used in our (-)-GP diets of 8, 6 and 32 ppm were approximately 12 to 50 fold lower than the FDA limit. Our results demonstrated decreases in proliferation of MCF-7

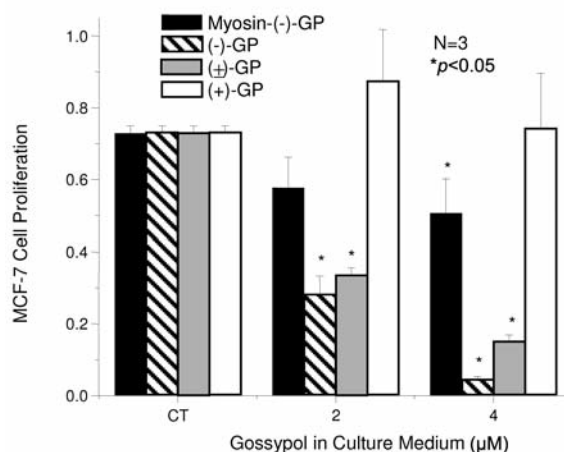


Figure 4. Anti-proliferative effects of the gossypol enantiomers (-)-GP, (±)-GP, (+)-GP and (-)-GP-bound chicken myosin on the ERα-positive human breast cancer cell line, MCF-7.

cells when using pure (-)-GP, (-)-GP bound to myosin and sera containing (-)-GP. The low concentrations GP enantiomers contained in the blood of chickens that consumed the (-)-GPCSM diets are biologically active and capable of inhibiting of human breast cancer cell growth *in vitro*.

The lowered electrophoretic mobility of the covalently bound myosin-(-)-GP complex could be due to either the prevention of the association of SDS at the proper ratio of 1.4 g per g of protein or the cross linking of the myosin heavy chains by the (-)-GP ligand, in an unknown way. It is unlikely that the myosin heavy chains shown in Figure 5 lane 3 were non-covalently cross-linked since SDS denatures proteins and disrupts all non-covalent bonds. In addition, the presence of DTT reduces any covalent disulfide bonds. Therefore, it is likely that the lowered electrophoretic mobility of the myosin heavy chains in Figure 5 lane 3 is due to the covalent binding of (-)-GP to the myosin at as yet to be determined amino acid residues.

The observation that the chicken meat protein, myosin, bound (-)-GP was biologically active at a lower potency *in vitro* than the pure free (-)-GP and (±)-GP is novel. This is the first evidence demonstrating that a chicken muscle protein (myosin) bound to (-)-GP is biologically active in inhibiting proliferation of a human breast cancer cell *in vitro*. These results provide support for our hypothesis that the (-)-GP bound to muscle proteins from the (-)-GPCSM fed layers has bioactivity in protecting the healthy consumers and human breast cancer patients.

Results from previous studies demonstrated that the GP enriched-milk is a potent aromatase inhibitor in ovarian granulosa cells (39). The 10% GP-milk, equivalent to 1.29 ppm used was about 348 times lower than the FDA limit of 450 ppm. Those investigators concluded GP-milk could be considered as a bio-active food component as an aromatase inhibitor.

In another study, GP-milk at 10% and 20% (v/v), equivalent to 2.59 ppm significantly suppressed aromatase activity when compared to the 10% and 20% control milk-treated human breast cancer cell line, MCF-7 (31). To the best of our knowledge, this was the first solid evidence demonstrating that biologically active GP present in GP-milk can exert its inhibitory action in regulating aromatase activity in MCF-7 cells as the parent compound ( $\pm$ )-GP does.

In another study using GP-containing serum harvested from nursing rat dams fed GP-milk exhibited a suppression of cAMP production in ovarian luteal cells (40). Using  $^3\text{H}$ -labeled GP as a tracer it was shown that the nursing dams were able to transfer the  $^3\text{H}$ -GP through the milk to the neonatal pups (33). In the ovarian luteal cells, the  $^3\text{H}$ -GP had differential affinity for different organelles in the cell fractions (34). These results suggested that the serum protein-bound GP is biologically active in regulating the secretion of cAMP in ovarian luteal cells.

Because aromatase converts androgens into estrogens in humans, consumption of this bioactive food component could have a clinically relevant impact on human breast cancer cell proliferation. This results from the fact that aromatase inhibitors are currently clinically used and recognized as better therapeutic drugs than the anti-estrogenic drug Tamoxifen. The potential for the chemopreventive potential of meat derived from animals fed diets containing GP is highlighted by the observation that aromatase inhibitors (such as anastrozole, letrozole) have been clinically evaluated and it was concluded that they were a more effective in treatment of human breast cancer patients than the antiestrogen drug, tamoxifen for breast cancer patients (35-38).

In the current study, we show that the sera from chickens that consumed a known level of GP in the experimental diet are the first to provide relevant scientific evidence demonstrating that the bioactive GP circulated in these (-)-GPCSO fed chickens indeed possesses anti-human breast cancer activity *in vitro*. Based on the sera activity, it is conceivable that similar anti-breast cancer activities in a different magnitude will be presented in these biological samples harvested from the (-)-GP fed layer hens. We have confidence that the experimental data generated in this study may influence the fundamental thinking regarding utilization of low cost agricultural commodities such as (-)-GPCSM to produce value-added chemopreventive animal products to benefit the consumers in our society.

### Acknowledgements

This research was partially supported by Cotton Incorporated project # 06-864. A portion of salaries and research support were provided by State and Federal funds appropriated to the Ohio Agricultural Research and Development Center, The Ohio State University.

### References

- 1 Boatner C, Castillon L, Hall C and Neely J: Gossypol and gossypurpurin in cottonseed of different varieties of *G. barbadense* and *G. hirsutum*, and variation of the pigments during storage of the seed. *J Am Oil Chem Soc* 26(1): 19-25, 1949.
- 2 Cherian G, Wolfe FW and Sim JS: Dietary oils with added tocopherols: effects on egg or tissue tocopherols, fatty acids, and oxidative stability. *Poult Sci* 75(3): 423-431, 1996.
- 3 Cherian G, Holsonbake TB, Goeger MP and Bildfell R: Dietary CLA alters yolk and tissue FA composition and hepatic histopathology of laying hens. *Lipids* 37(8): 751-757, 2002.
- 4 Cherian G, Traber MG, Goeger MP and Leonard SW: Conjugated linoleic acid and fish oil in laying hen diets: effects on egg fatty acids, thiobarbituric acid reactive substances, and tocopherols during storage. *Poult Sci* 86(5): 953-958, 2007.
- 5 Food and Drug Administration. *Food Drug Cosmetic Law* 56, 518.94, 172.894, 1974.
- 6 Band V, Hoffer AP, Band H, Rhinehardt AE, Knapp RC, Matlin SA *et al*: Antiproliferative effect of gossypol and its optical isomers on human reproductive cancer cell lines. *Gynecol Oncol* 32(3): 273-277, 1989.
- 7 Benz C, Hollander C, Keniry M, James TL and Mitchell M: Lactic dehydrogenase isozymes,  $^{31}\text{P}$  magnetic resonance spectroscopy, and *in vitro* antimitochondrial tumor toxicity with gossypol and rhodamine-123. *J Clin Invest* 79(2): 517-523, 1987.
- 8 Benz C, Keniry M and Goldberg H: Selective toxicity of gossypol against epithelial tumors and its detection by magnetic resonance spectroscopy. *Contraception* 37(3): 221-228, 1988.
- 9 Benz CC, Keniry MA, Ford JM, Townsend AJ, Cox FW, Palayoor S *et al*: Biochemical correlates of the antitumor and antimitochondrial properties of gossypol enantiomers. *Mol Pharmacol* 37(6): 840-847, 1990.
- 10 Coyle T, Levante S, Shetler M and Winfield J: *In vitro* and *in vivo* cytotoxicity of gossypol against central nervous system tumor cell lines. *J Neurooncol* 19(1): 25-35, 1994.
- 11 Jaroszewski JW, Kaplan O and Cohen JS: Action of gossypol and rhodamine 123 on wild-type and multidrug-resistant MCF-7 human breast cancer cells:  $^{31}\text{P}$  nuclear magnetic resonance and toxicity studies. *Cancer Res* 50(21): 6936-6943, 1990.
- 12 Liang XS, Rogers AJ, Webber CL, Ormsby TJ, Tiritan ME, Matlin SA *et al*: Developing gossypol derivatives with enhanced antitumor activity. *Invest New Drugs* 13(3): 181-186, 1995.
- 13 Thomas M, von Hagen V, Moustafa Y, Montmasson MP and Monet JD: Effects of gossypol on the cell cycle phases in T-47D human breast cancer cells. *Anticancer Res* 11(4): 1469-1475, 1991.
- 14 Tuszynski GP and Cossu G: Differential cytotoxic effect of gossypol on human melanoma, colon carcinoma, and other tissue culture cell lines. *Cancer Res* 44(2): 768-771, 1984.
- 15 Wang Y and Rao PN: Effect of gossypol on DNA synthesis and cell cycle progression of mammalian cells *in vitro*. *Cancer Res* 44(1): 35-38, 1984.
- 16 Wu YW, Chik CL and Knazek RA: An *in vitro* and *in vivo* study of antitumor effects of gossypol on human SW-13 adrenocortical carcinoma. *Cancer Res* 49(14): 3754-3758, 1989.
- 17 Hu YF, Chang CJ, Brueggemeier RW and Lin YC: Gossypol inhibits basal and estrogen-stimulated DNA synthesis in human breast carcinoma cells. *Life Sciences* 53(25): PL433-438, 1993.

- 18 Gilbert NE, O'Reilly JE, Chang CJ, Lin YC and Brueggemeier RW: Antiproliferative activity of gossypol and gossypolone on human breast cancer cells. *Life Sci* 57(1): 61-67, 1995.
- 19 Shidaifat F, Canatan H, Kulp SK, Sugimoto Y, Chang WY, Zhang Y *et al*: Inhibition of human prostate cancer cells growth by gossypol is associated with stimulation of transforming growth factor-beta. *Cancer Lett* 107(1): 37-44, 1996.
- 20 Shidaifat F, Canatan H, Kulp SK, Sugimoto Y, Zhang Y, Brueggemeier RW *et al*: Gossypol arrests human benign prostatic hyperplastic cell growth at G<sub>0</sub>/G<sub>1</sub> phase of the cell cycle. *Anticancer Res* 17(2A): 1003-1009, 1997.
- 21 Chang CJ, Ghosh PK, Hu YF, Brueggemeier RW and Lin YC: Antiproliferative and antimetastatic effects of gossypol on Dunning prostate cell-bearing Copenhagen rats. *Res Commun Chem Pathol Pharmacol* 79(3): 293-312, 1993.
- 22 Ligueros M, Jeoung D, Tang B, Hochhauser D, Reidenberg MM and Sonenberg M: Gossypol inhibition of mitosis, cyclin D1 and Rb protein in human mammary cancer cells and cyclin-D1 transfected human fibrosarcoma cells. *Br J Cancer* 76(1): 21-28, 1997.
- 23 Joseph AE, Matlin SA and Knox P: Cytotoxicity of enantiomers of gossypol. *Br J Cancer* 54(3): 511-513, 1986.
- 24 Shelley MD, Hartley L, Groundwater PW and Fish RG: Structure-activity studies on gossypol in tumor cell lines. *Anticancer Drugs* 11(3): 209-216, 2000.
- 25 Zhang Y, Wang Y, Li C, Zhou J, Zhang D and Han M: Estrogen and progesterone cytosol receptor concentrations in patients with endometriosis and their changes after gossypol therapy. *Chin Med J (Engl)* 109(10): 814-816, 1996.
- 26 Margossian SS and Lowey S: Preparation of myosin and its subfragments from rabbit skeletal muscle. *Methods Enzymol* 85(Pt B): 55-71, 1982.
- 27 Laemmli UK: Cleavage of structural proteins during the assembly of the head of bacteriophage T4. *Nature* 227(5259): 680-685, 1970.
- 28 Moore LA, Arrizubieta MJ, Tidyman WE, Herman LA and Bandman E: Analysis of the chicken fast myosin heavy chain family. Localization of isoform-specific antibody epitopes and regions of divergence. *J Mol Biol* 225(4): 1143-1151, 1992.
- 29 SAS version 9.1.3, SAS Institute; Cary, NC, 2009.
- 30 Lordelo MM, Calhoun MC, Dale NM, Dowd MK and Davis AJ: Relative toxicity of gossypol enantiomers in laying and broiler breeder hens. *Poult Sci* 86(3): 582-590, 2007.
- 31 Akira A, Ohmura H, Uzumcu M, Araki T and Lin YC: Gossypol inhibits aromatase activity in cultured porcine granulosa cells. *Theriogenology* 41(7): 1489-1497, 1994.
- 32 Hu YF, Chang CJ, Brueggemeier RW and Lin YC: Presence of antitumor activities in the milk collected from gossypol-treated dairy cows. *Cancer Lett* 87(1): 17-23, 1994.
- 33 Lin YC, Hu YF, Chang CJ, Moh PP and Kulp SK: Transfer of <sup>3</sup>H-gossypol to neonatal rats *via* milk of nursing dams. *Life Sci* 51(21): 1657-1665, 1992.
- 34 Lin YC, Gu Y, Brueggemeier RW and Rikihisa Y: Binding of - gossypol in organelles of cultured bovine luteal cells. *Life Sci* 50(6): 443-447, 1992.
- 35 Howell A: Adjuvant aromatase inhibitors for breast cancer. *Lancet* 366(9484): 431-433, 2005.
- 36 Thurlimann B, Keshaviah A, Coates AS, Mouridsen H, Mauriac L, Forbes JF *et al*: A comparison of letrozole and tamoxifen in postmenopausal women with early breast cancer. *N Engl J Med* 353(26): 2747-2757, 2005.
- 37 Coates AS, Keshaviah A, Thurlimann B, Mouridsen H, Mauriac L, Forbes JF *et al*: Five years of letrozole compared with tamoxifen as initial adjuvant therapy for postmenopausal women with endocrine-responsive early breast cancer: update of study BIG 1-98. *J Clin Oncol* 25(5): 486-492, 2007.
- 38 Rose C: Increasing protection after tamoxifen: insights from the extended adjuvant aromatase inhibitor trials. *J Cancer Res Clin Oncol* 134(1): 7-17, 2008.
- 39 Lin YC, Nuber DC, Gu Y, Gutler G, Hinchcliff KW and Haibel G: Pharmacokinetics of gossypol in mid-lactation brown Swiss dairy cows. *Vet. R. Commun.* 15: 379-385, 1991.
- 40 Lin YC and Gu Y: Suppression of cAMP production in cultured bovine luteal cells by serum obtained from gossypol-treated nursing dams. *Biol. Reprod. Suppl* 40: 313A, 1989.

Received October 15, 2009

Accepted December 21, 2009